

Kirloskar Pneumatic Company Limited

A Kirloskar Group Company



Investor Presentation

Disclaimer

This presentation has been prepared solely for use at the investor/analyst presentation. By attending the meeting where this presentation is made, or by reading the presentation slides, you agree to be bound by the following limitations:

Statements in this presentation, particularly those which relate to management's views and analysis, describing the Company's objectives, projections, estimates and expectations may constitute "forward looking statements" within the meaning of applicable laws and regulations. Actual results may differ materially from those anticipated in the forward-looking statements. The company assumes no obligation to update forward-looking statements to reflect actual results, changed assumptions or other factors.

Kirloskar Pneumatic Company Limited

Four core business lines:

- Air Compressors
- Refrigeration Compressors & compression systems.
- Gas compressors & compression systems.
- Precision Engineering Division
 - ✓ 60 plus years in business.
 - ✓ Debt free; strong dividend track record.
 - ✓ 3 plants in Maharashtra; workforce of over 1800. Over 200 engineers.
 - ✓ Strongly vertically integrated manufacture.
 - ✓ Listed company with over 60K shareholders.
 - ✓ Market cap: Rs 10,000 Cr+ as on 27th May 2026
 - ✓ Our current sales split is
 - ~ 18% -20% Air compressor;
 - ~ 35% - 40% Refrigeration compressors
 - ~ 35% - 40% Gas compressor systems
 - ~ 7% - 9% others;

Hadapsar, Pune (MH)



Built-Up – 30625 Sq M

Saswad, Pune (MH)



Built-Up – 8485 Sq M

Nashik, (MH)



Area 150 acres

Pharmaceuticals & Chemicals

Automotive Engineering

Marine

Power Generation

Wind, Thermal, Nuclear, Hydro, Solar

Oil & Gas

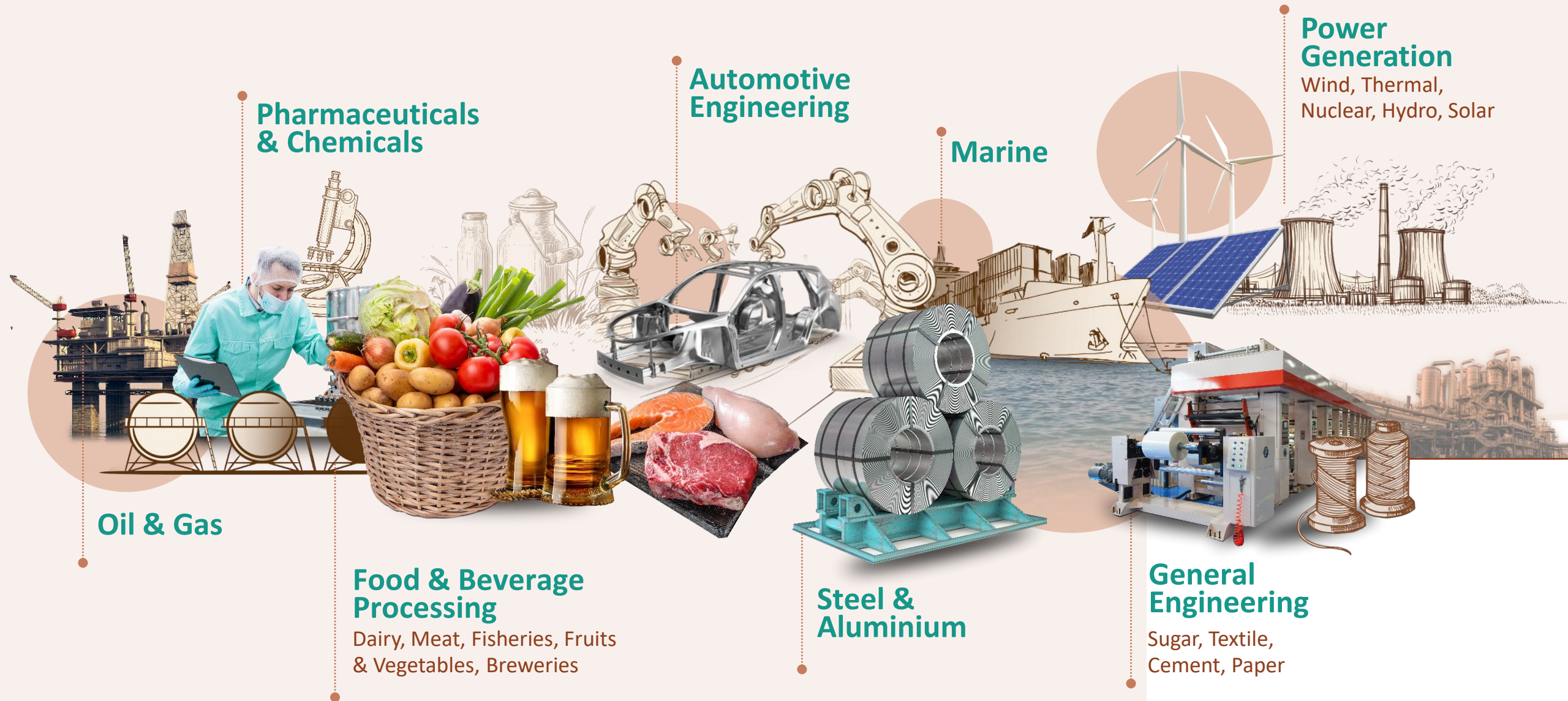
Food & Beverage Processing

Dairy, Meat, Fisheries, Fruits & Vegetables, Breweries

Steel & Aluminium

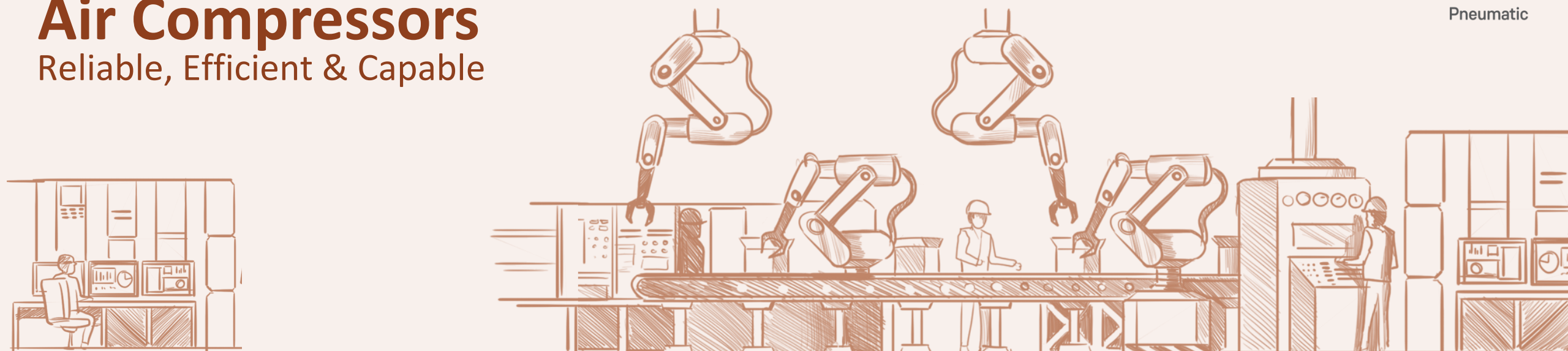
General Engineering

Sugar, Textile, Cement, Paper



Air Compressors

Reliable, Efficient & Capable



Centrifugal Compressors



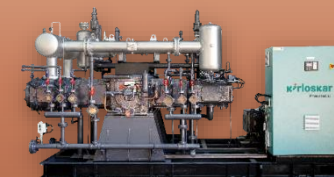
Diesel Portable Compressors



Waterwell Compressors



Electric Screw Compressors



Reciprocating Air Compressors



Reciprocating Gas Compressors

Capacity
(CFM)

1200 - 8100

160 - 600

450 - 1200

22 - 1047

35 - 6200

Pressure
Kg/cm²(g)

2.5 - 10.4

7 - 14

10.5 - 24.6

7.5 - 13

1 - 400

Centrifugal Compressors

Screw Compressors

Reciprocating Compressors

Reciprocating Compressor

Type

BOP Compressor
HP Compressor
Gas Compressor
Vertical
Compressor

Capacity range

35 to 6200 CFM

Applications

Air Separation, Cement,
Steel, Power,
Petrochemical, Oil Fields,
Refineries, Fertilizer, Pulp
& Paper, Food
Processing, Chemicals.

Gas Handled

Air, CO₂, LPG, H₂,
Methyl Chloride,
R22, R32, N₂,
Natural Gas, Bio-gas,
crude gas, feed gas,
Recycled Gas,
Syngas

Pressure range

1 to 400
kg/cm² g

Drive

Electric Motor
Engine Driven



Large 4 Stage Reciprocating Compressor Packages

For Alkali & Chemical Plants



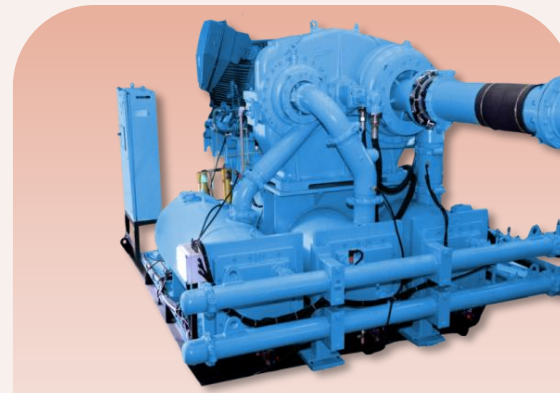




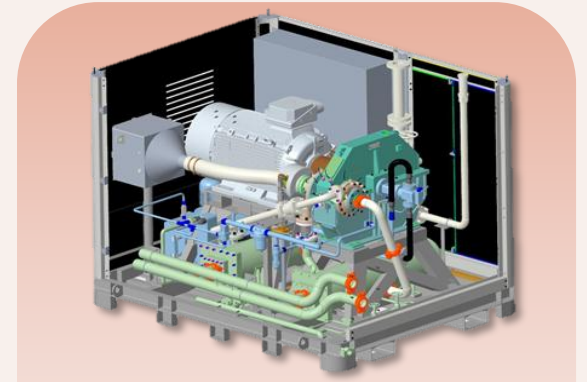
A-2100



A-3500



A-7000



A-800

Compressor Frame	Flow CFM	
	Minimum	Maximum
A-800	600	1200
A-2100	1200	2400
A-3500	2500	4400
A-5000	4400	5600
A-7000	5600	8100
Future A-12000**	8100	16000

Pressure Range:

For 3 Stage – 4.5 Bar G to 10.4 Bar G

For 2 Stage – 2.5 Bar G to 4.5 Bar G



**A Rs 500+ crore
business
opportunity**

Best in class
efficiency

Reliability

Robust Design

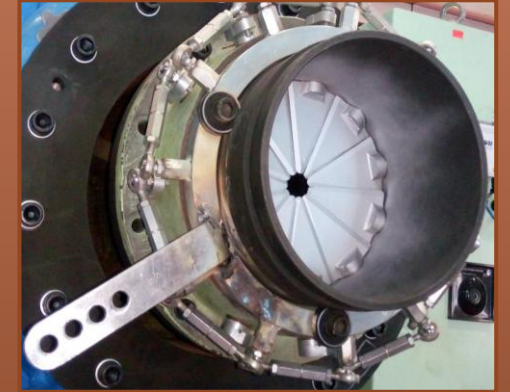
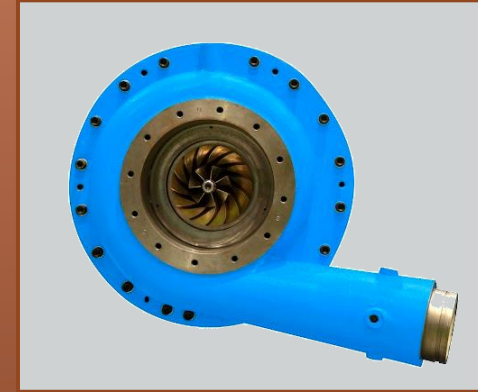
Serviceability

Features

- Custom designed Aero components for efficient operation
- Optimized volute design for effective pressure recovery
- IGV – 9 % more efficient at part load
- Stainless steel coolers with low pressure drop
- Gearing as per AGMA 6011 –Q 13
- Tilting pad bearings designed for lifelong operation
- Impeller & Diffuser are made of Stainless steel
- Identical tube bundles for all stages – Inventory benefit
- Horizontally split gear casing, bearings and seals
 - ✓ Quick inspection of bearings
- Skid mounted canopied version

Manufacturing

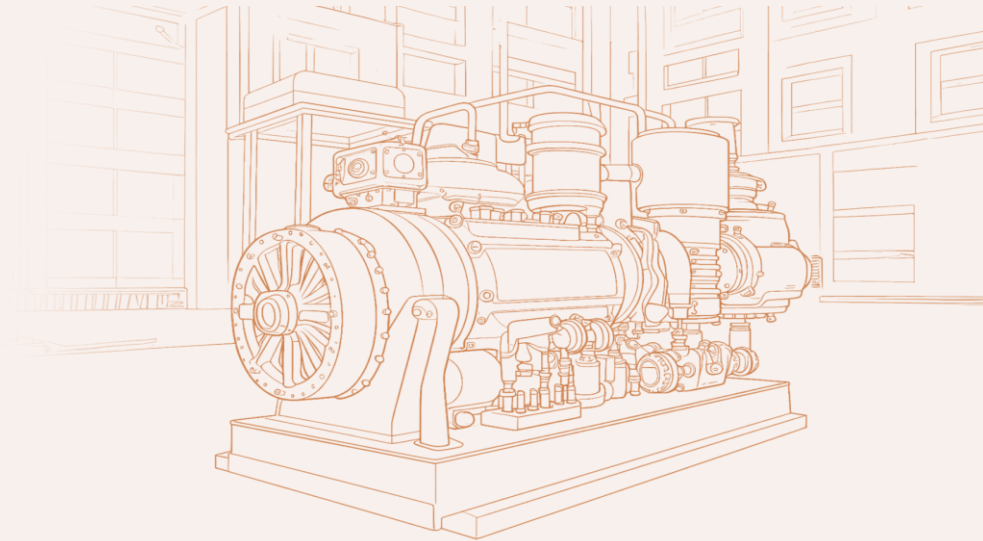
- In house impeller mfg.
- Complete value chain with cost advantage



Electric Screw Compressor Range

KPCL has designed and developed a family of KES series of

with the power range starting from 7 to 160 kW | 10 to 215 HP



R1

7 – 11 kW
10 – 15 HP
32 – 62 CFM
7 – 13 bar g



R2- Belt Driven

15 – 22 kW
20 – 30 HP
51 – 126 CFM
7 – 13 bar g



R2

15 – 30 kW
20 – 40 HP
62 – 187 CFM
7 – 13 bar g



R3

30 – 55 kW
40 – 75 HP
133 – 372 CFM
7 – 13 bar g



R4

75 – 90 kW
75 – 120 HP
345 – 633 CFM
7 – 13 bar g



R5

110 – 160 kW
150 – 215 HP
551 - 1047 CFM
7 – 13 bar g

New Launch

HYDRINO

Oil free - Water Injected Screw Compressor

Technical Specifications

Motor Rating: 55 kW

Pressure: 7 / 8 / 10 bar(g)

Flow Capacity: 350 / 325 / 300 CFM



Key Features / USPs

- Water-lubricated bearings – truly oil-less.
- Single-stage, direct drive with VFD.
- 100% oil-free air (ISO 8573-1 Class 0).
- Low-temperature operation with high thermal stability.
- Silent operation with minimal vibration.
- Best-in-class life cycle cost.
- Single annual preventive maintenance cycle.
- Designed & manufactured in India.

Technology Development Partner: IISc Bengaluru

Major Applications

- Food & Beverage
- Pharmaceutical & Medical
- Electronics & Semiconductors
- Textile

CII Award for IP's filings...

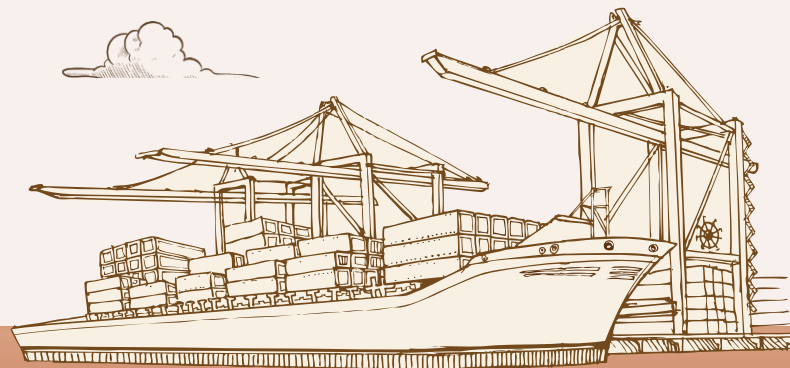
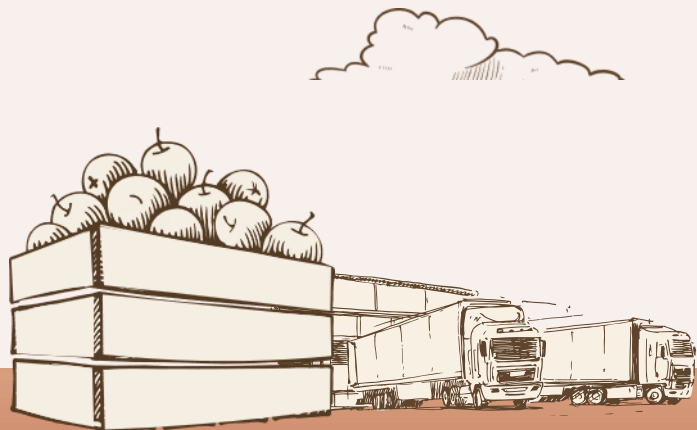
**Runner Up Award for Highest IP Filing
in the category of Large - Engineering /
Manufacturing Companies**

**Joined the club of Top 30 IP Driven
Organization 106 IPs filed as on
31.December.2025**



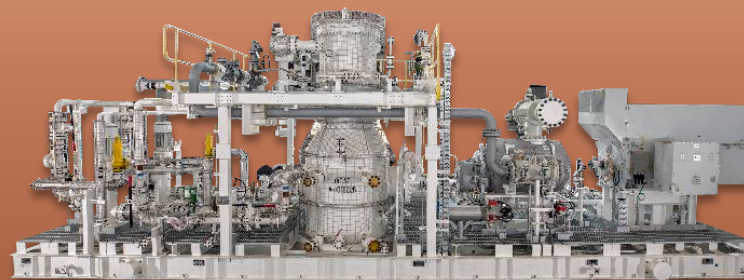
Air Conditioning & Refrigeration

Cooling our way into the future



Air Conditioning and Refrigeration Equipment

- Reciprocating Compressors - KCX/PCX/ KZX
- After Market
- Screw Compressors - Khione
- Semi Hermetic - Tyche



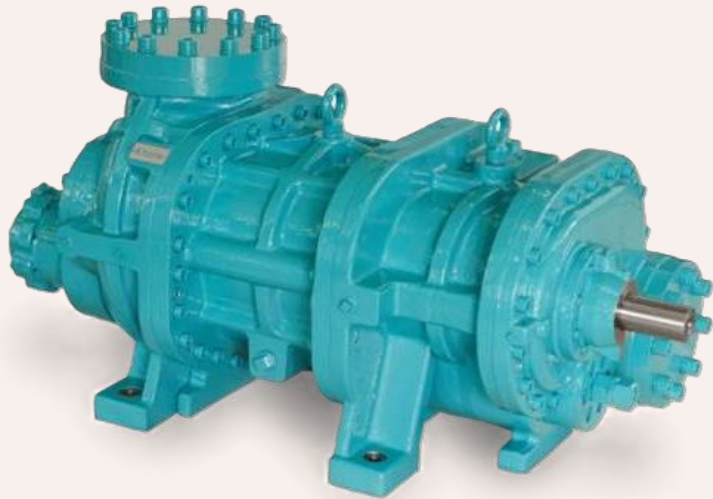
Refrigeration Systems

- Hydrocarbon Refrigeration
- AC& R for marine applications
- Ref Systems using Khione Compressors



Vapour Absorption Chillers

- Steam Fired
- Hot water Fired
- Hybrid chillers
- Exhaust Chiller



Screw Compressor



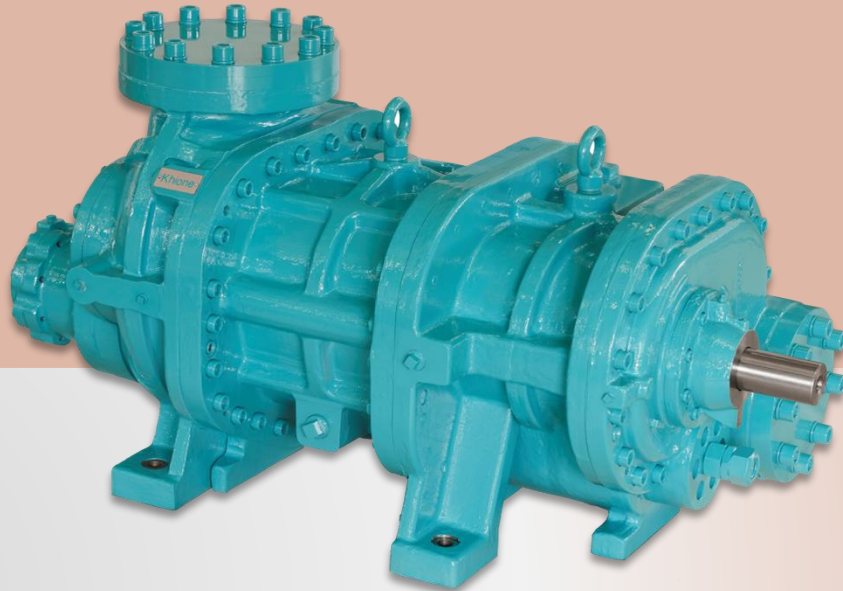
Screw Compressor Package

INDIA'S

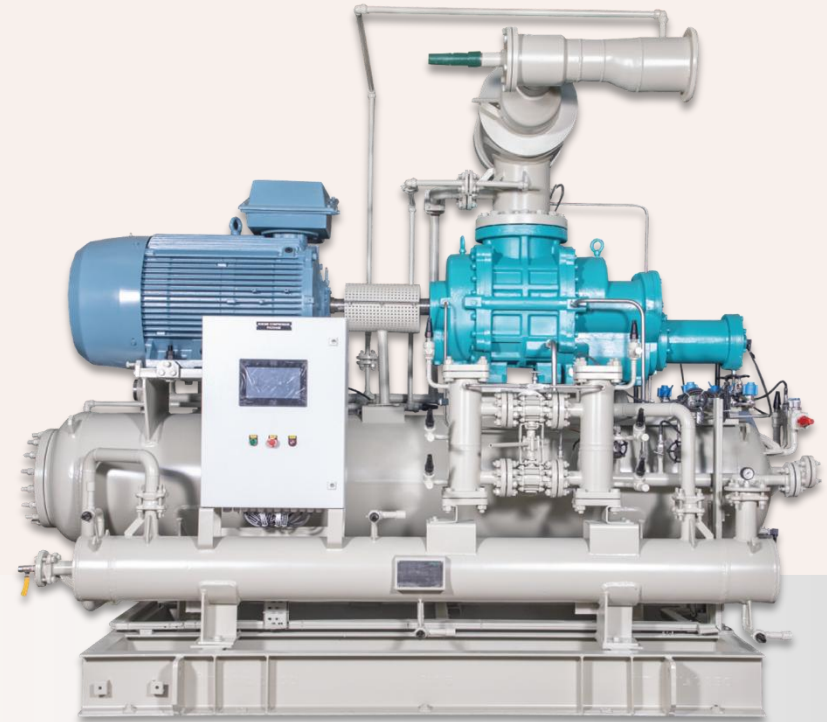
1 **ST**

Twin Screw
Refrigeration
Compressor

Screw Compressor -
Bare Shaft



Screw Compressor
Package



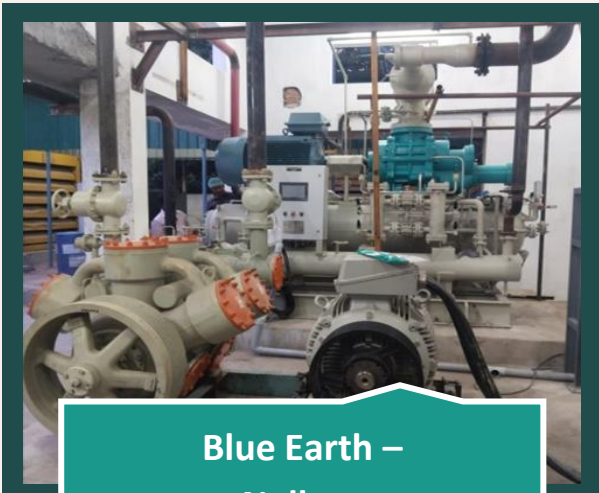
KRS – KHIONE Screw Compressor Installation



**Amul Dairy –
Chittoor**



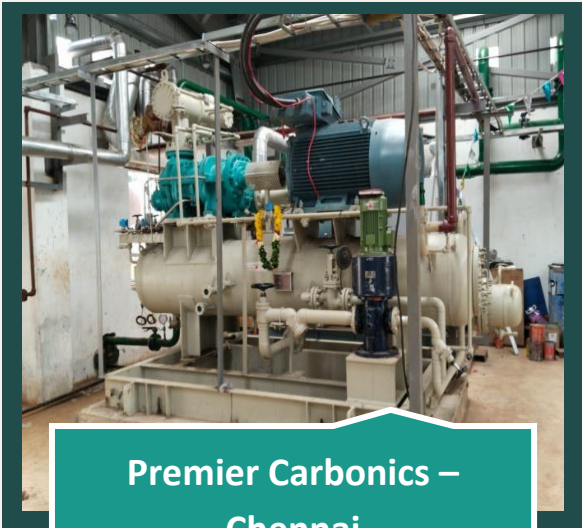
**McPatel Frozen Foods
Pvt Ltd - Mehsana, Gujarat**



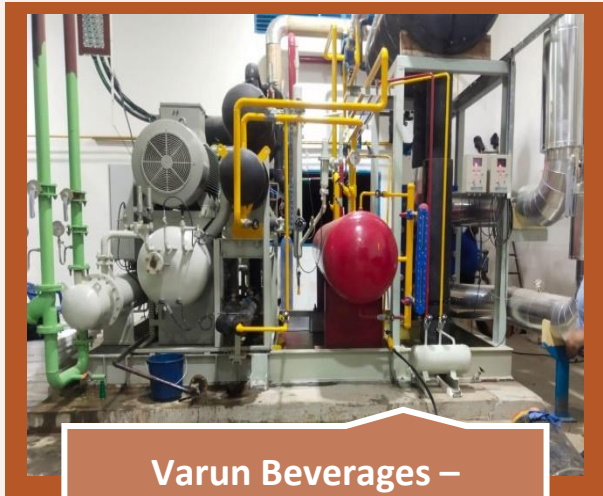
**Blue Earth –
Nellore**



**Shramik Dairy –
Sangamner, Maharashtra**



**Premier Carbonics –
Chennai**



**Varun Beverages –
Sri city Andhra Pradesh**



**NewRyan Global –
Gwalior**



Product applications:

High temperature: (+)5 to (-)5 °C

- Air conditioning, Cold storage, Milk processing, Retail cooling systems

Medium temperature: (-)10 to (-)20 °C

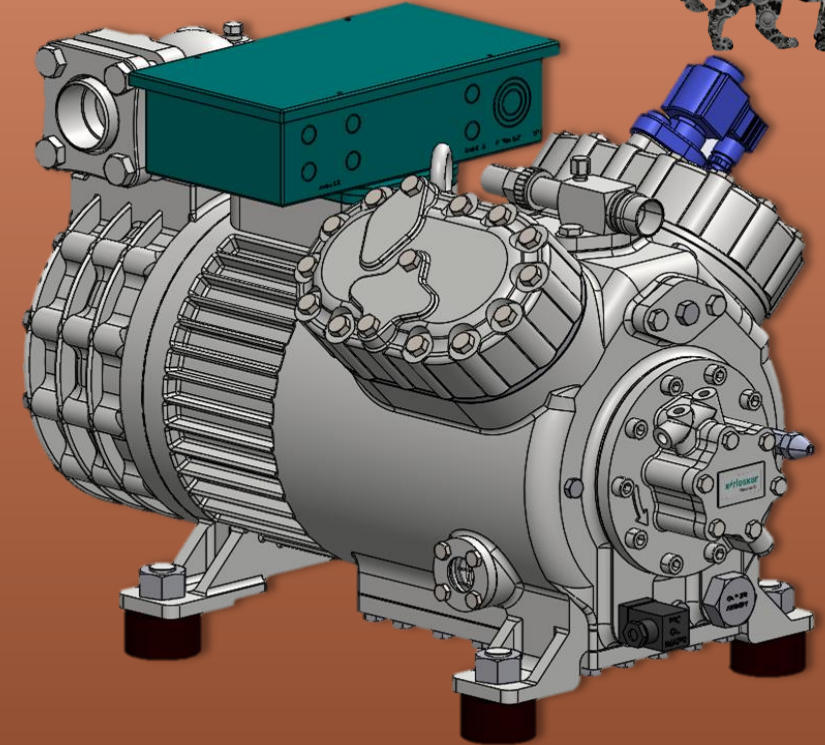
- Marine cooling systems, Ice making

Low temperature: (-)25 to (-)35 °C

- Cold room, frozen food, fisheries, Ice cream hardening chambers

Product features

- Robust design
- Suitable for varied refrigerants - R134a, R404a, R507, R22, R407C
- Exchangeable electric motor
- VFD compatible
- Capacity Control
- Motor protection systems



4QP7 compressor model

LWH : 800 X 404 X 442 mm

Weight : 230 kg

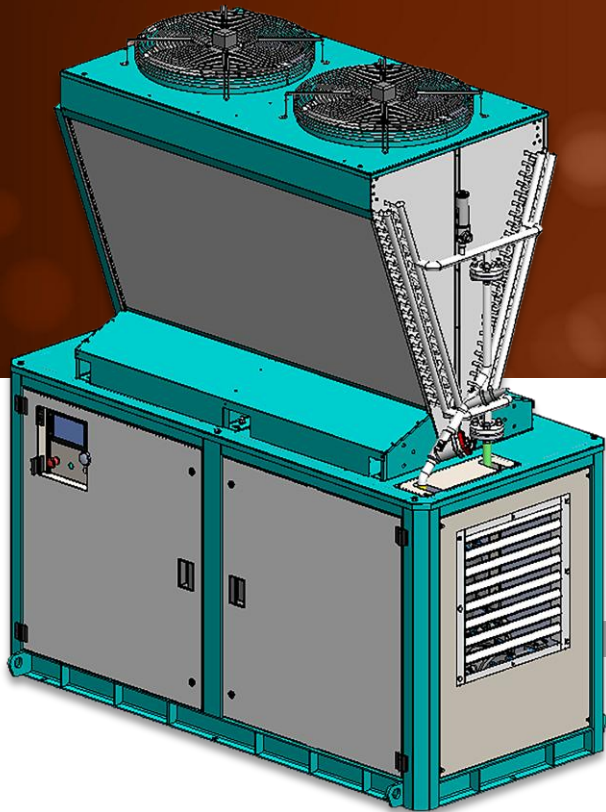
Refrigeration Packages



Zephyros

Air Cooled Chiller Package

A compact ammonia-based AC package offering reliable cooling with long-term energy savings and minimal environmental impact.



- Compact
- Efficient
- Sustainable

Features



Natural Refrigerant (NH₃) Zero ODP/GWP



Semi-sq. Hermetic Patented Motor Cooling Technology



Capacity: 7-35 TR



Control unit + VFD for Precise Capacity Control



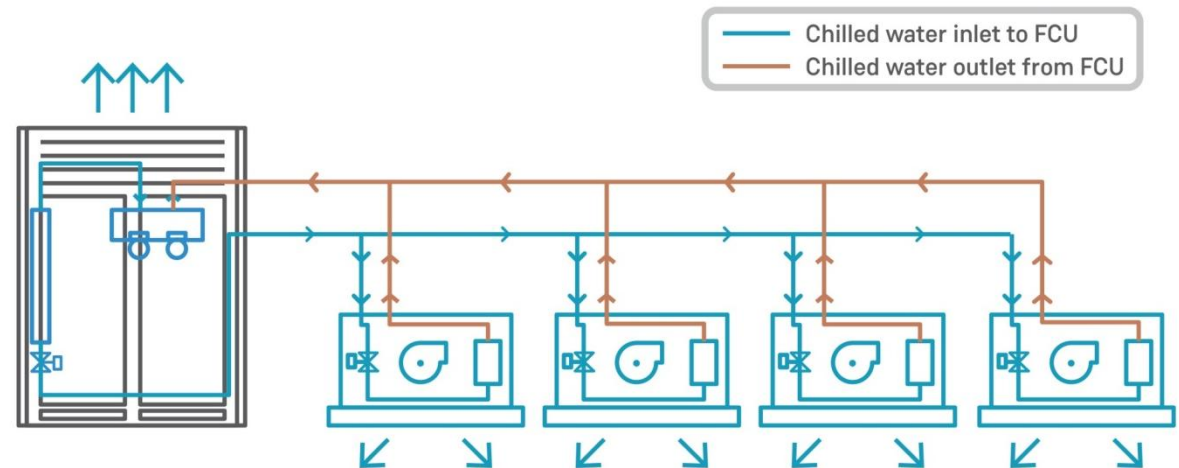
Evaporating Temp. 0°C to 5°C.



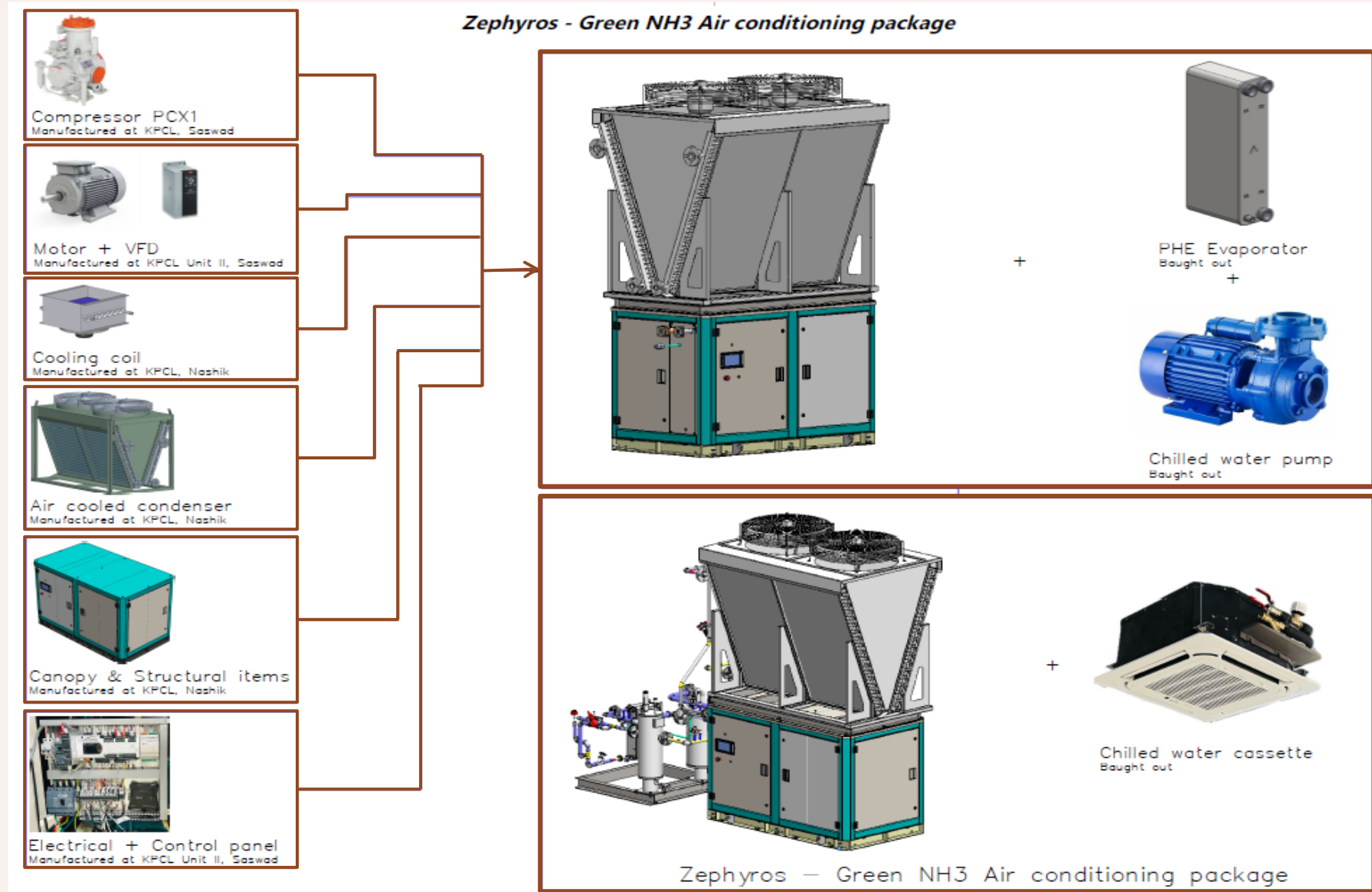
20 - 30% Energy Savings



Air-Cooled Condenser - No Water Required



Zephyros – Air Cooled Chiller Package



PLIWG Portal

Your Application has been successfully updated.

KIRLOSKAR PNEUMATIC COMPANY LIMITED

Your application under PLI Scheme for White Goods has been received with submission id: [PLIWG/20251013/105](#) has been successfully updated. The application submission is subject to verification for its completeness in all respect.

The acknowledgment of receipt or submission of your application shall not be construed as approval under the scheme. You are requested to submit a copy of the application duly signed by your authorised signatory along with any fresh documents uploaded with the updated application to PMA. For this please refer to the attached document to this mail for General Instructions for submission of Hard Copy of Application and supporting documents under PLI Scheme for White Goods (ACs and LED Components).

Regards
IFCI Ltd,
Project Management Agency,
PLI - White Goods Scheme (Air Conditioners and LEDs)
+91-11-4173 2000; +91-11-4173 2433; +91-11-4173 2403
Enquiry Mail: pliwg@ifcilt.com
Portal Issues: webadmin.pliwg@ifcilt.com

It uses Ammonia as a refrigerant.

Ammonia has four major advantages over CFCs and HCFCs:

- An ammonia-based refrigeration system **costs 10-20% less** to build than one that uses CFCs because narrower-diameter piping can be used.
- Ammonia is **about 20%** more efficient refrigerant than CFCs, so an ammonia-based system requires less electricity, resulting in **lower operating costs**.
- Ammonia is safe for the environment, with an **Ozone Depletion Potential (ODP) rating of 0** and a **Global Warming Potential (GWP) rating of 0**.
- Ammonia is substantially **less expensive** than CFCs or HCFCs – **by an order of at least 12 times**.

There are two key disadvantages to using ammonia as a refrigerant & What are the countermeasures used in Zephyros- C to address this effectively:

- (1) Ammonia is not compatible with copper, so it cannot be used in any system with copper pipes. More importantly, most air conditioning compressors use the Hermetic or Semi hermetic system where in the motor (with its copper winding) is cooled by the refrigerant. This is what makes the motor energy efficient. Hence most air conditioners use R 32 (is a HFC with GWP 675). The other refrigerant in use is R 410 A (is a HFC GWP 2088). **Notes: Global Warming Potential of Carbon Dioxide is taken as 1.** This means most of **the current refrigerants in use are thousands of times worse than CO2 emissions!**

Zephyros – C : We have designed a unique ‘semi-semi-hermetic’ motor / compressor enclosure that ensures that the motor is cooled indirectly without the ammonia getting in contact with the copper winding. We have also eliminated copper tubing in the primary circuit where ammonia is used. This has also reduced the cost.

- (2) Ammonia is Toxic in high concentrations. Two factors, however, mitigate this risk: ammonia's distinctive smell is detectable at concentrations well below those considered to be dangerous, and ammonia is lighter than air, so if any does leak, it will rise and dissipate in the atmosphere.

Zephyros – C : We use ammonia only in the primary circuit and only chilled water is circulated in copper pipes into the enclosed areas – office / commercial space. The Zephyros package is compact and can be kept outside in the open – preferably in the terrace, under shade. With this, even in the unlikely event of a leak, the ammonia quantity is small and will be quickly dispersed in air. It will never be at the concentration where its seen as toxic & harmful. Also it does not harm the environment: remember: **It has ZERO rating in both ODP (Ozone Depletion Potential) & GWP (Global Warming Potential)**

**KPCL will use its proven KC – series compressors in this.
Only Indian Air-conditioning system that is 100% indigenous !**

Process Gas Systems

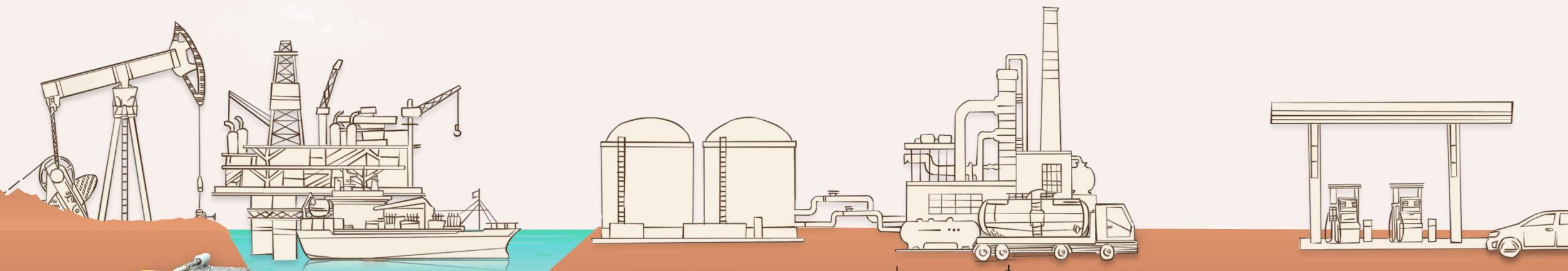
Customized Gas Compression Solutions

Upstream

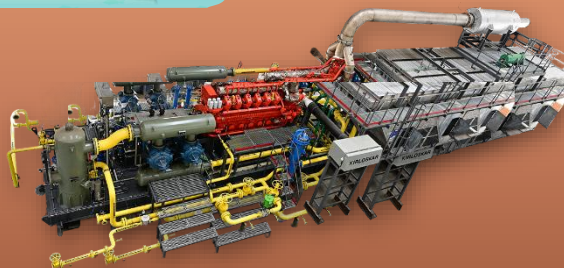
Midstream

Downstream

Distribution



**Exploration /
Production**
(Onshore & Offshore)



Transportation / Storage



Process Gas Compression



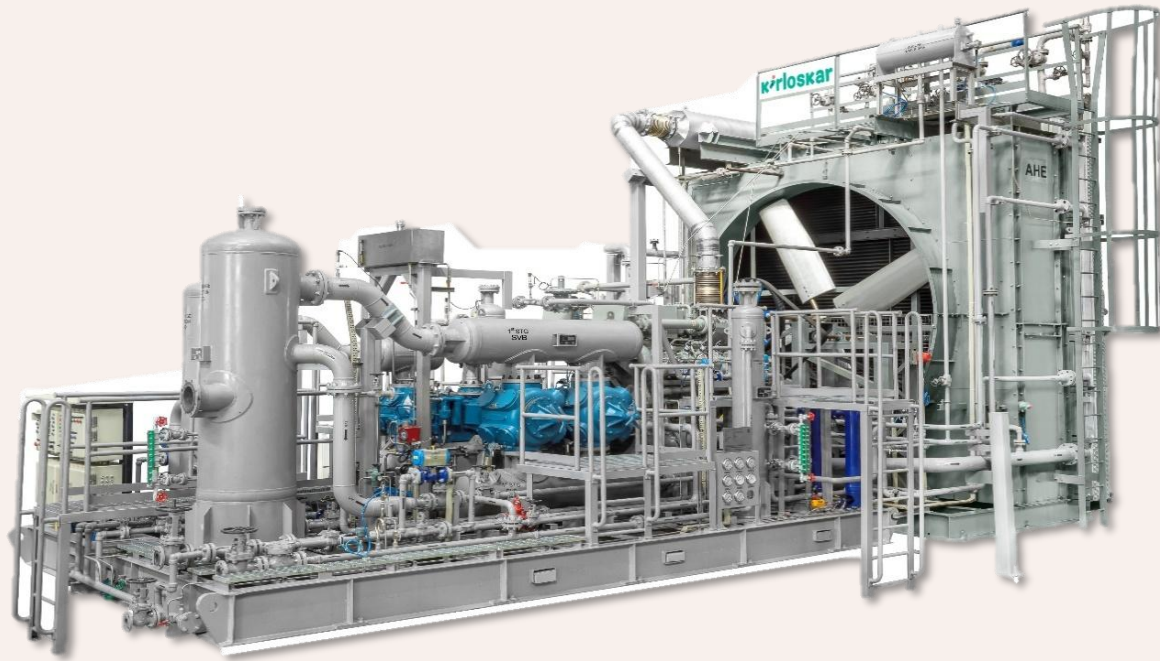
**CNG, Compressed Biogas* &
Hydrogen Diaphragm
Compressor Packages**

Reciprocating Compressor Packages (ISO 13631)
Screw Compressor Packages (API 619)

Reciprocating Compressor Packages (ISO 13631)

Reciprocating Compressor Packages (API 618)
Screw Compressor Packages (API 619)

*Reciprocating / Diaphragm** / Screw Compressor Packages
*For Compressed Biogas Applications
** For H2 & Other specialty Gases



➤ High Speed Reciprocating Gas Compressor System

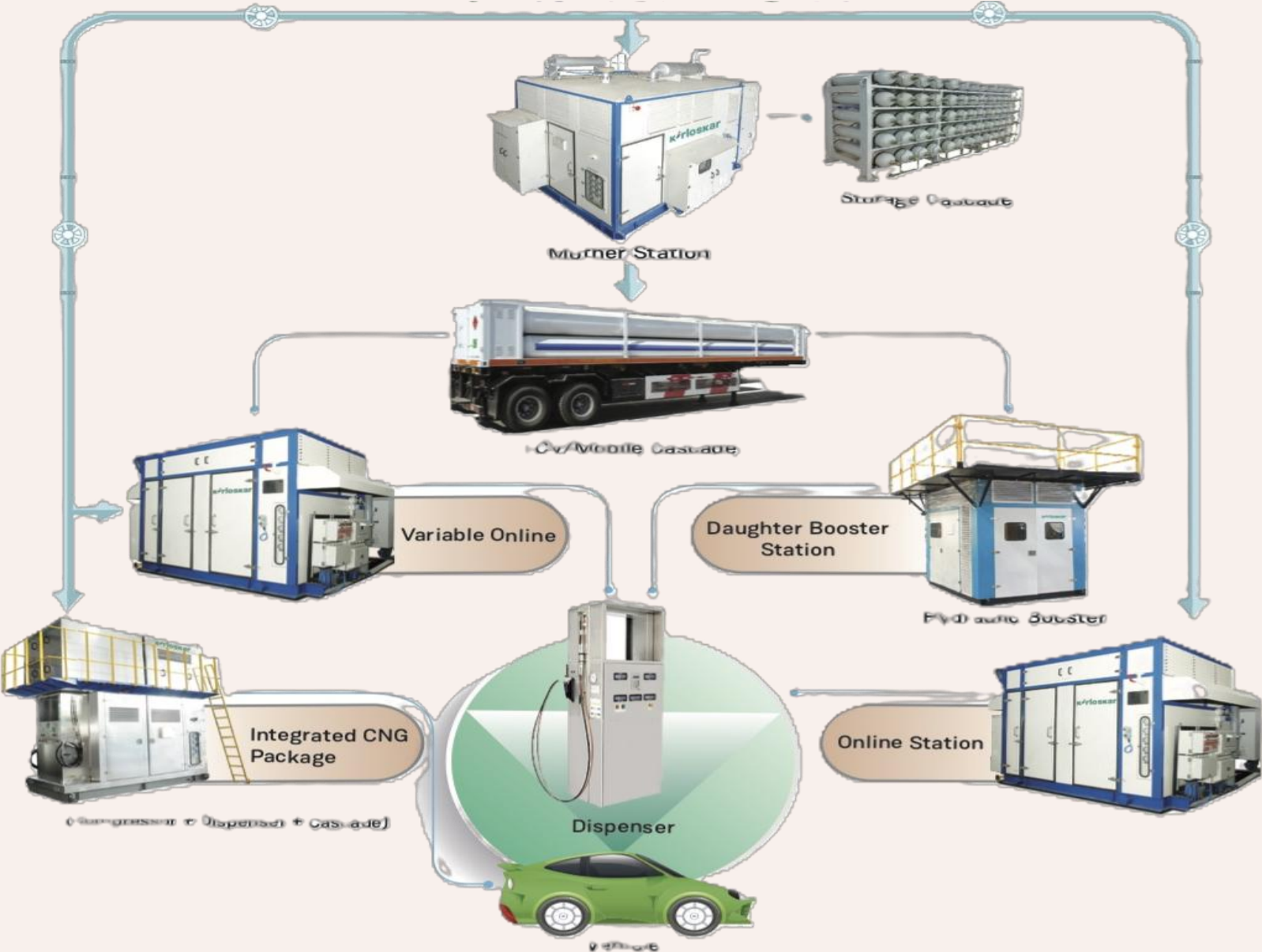
- Gas Flow: 50 CFM to 6000 CFM
- Pressures : 1 - 580 Bar
- Driver : Electric motor or Engine.



➤ High Speed Screw Gas Compressor System

- Gas Flow: 100 CFM to 6000 CFM
- Pressures : 1 - 32 Bar
- Driver : Electric motor or Engine

City Gas Distribution Pipeline



CNG Product Range



KCNG- OC Series



KCNG- VS Series



KCNG- IG Series



KCNG- HB Series

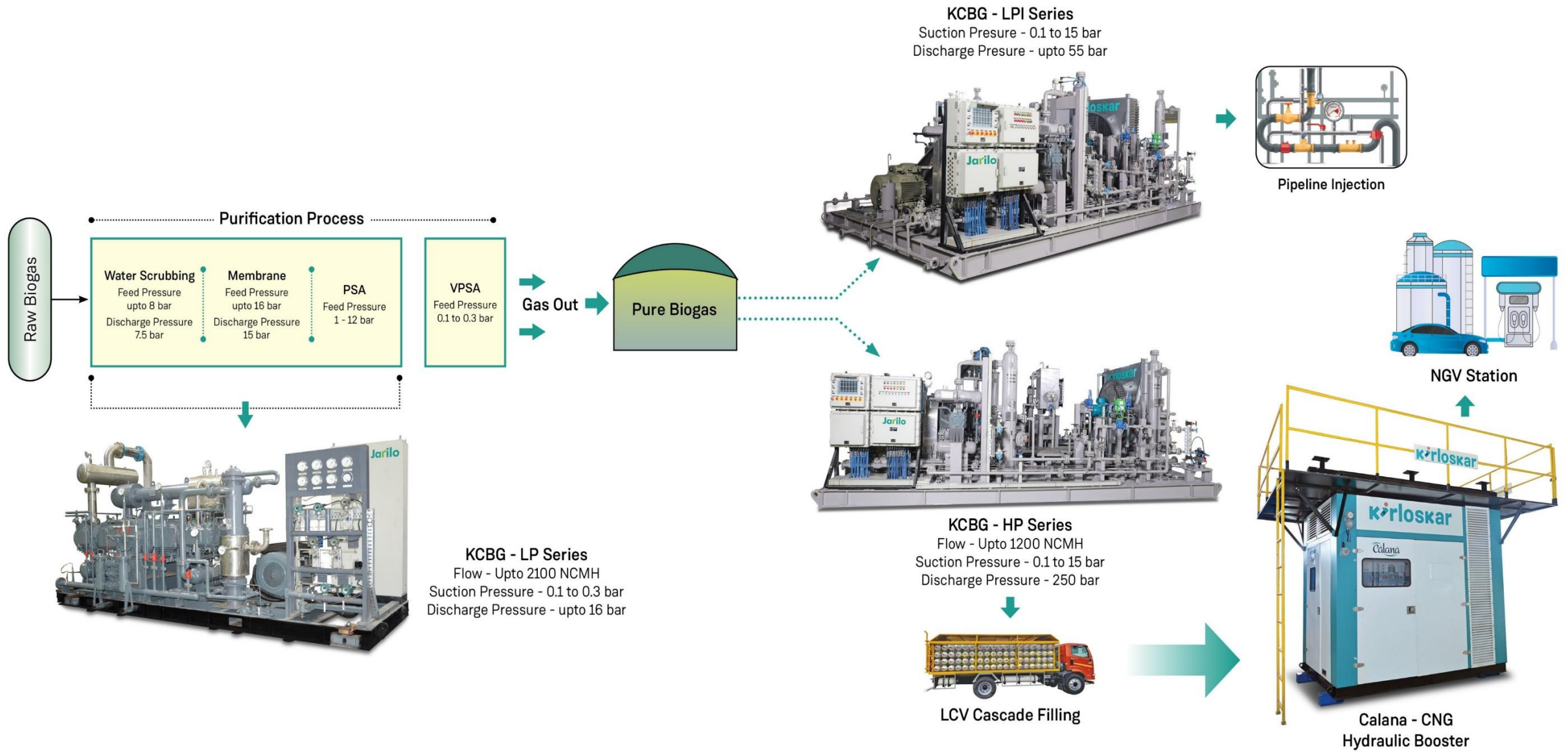
Online CNG Station

Flow Rate – 400 SCMH to 4326 SCMH
Suction Pressure Range – 0.3 to 70 kg/cm²G
Discharge Pressure – 255 kg/cm² G

Offline CNG Station

Flow Rate – 400 SCMH & 600 SCMH
Suction Pressure Range – 200 to 30 kg/cm²G
Discharge Pressure – 255 kg/cm² G

Biogas Value Chain





KCBG-LP SERIES

Low Pressure Biogas Compressor Package

Membrane / Water Scrubber Purification Technology – LP Compressor	
Compressor Type	Reciprocating Compressor / Screw
Capacity	250 nm ³ /hr to 2100 nm ³ /hr
Suction Pressure	80 mbar G to 1 bar G
Discharge Pressure	8 bar G to 16 bar G



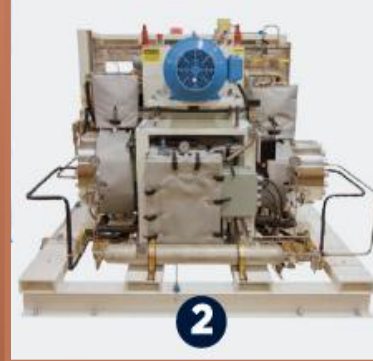
KCBG-HP SERIES

High Pressure Biogas Compressor Package

Membrane / Water Scrubber / PSA Purification Technology – HP Compressor	
Compressor Type	Reciprocating Compressor (2 , 4 throw)
Capacity	450 nm ³ /hr to 1200 nm ³ /hr
Suction Pressure	0.3 bar G to 15 bar G
Discharge Pressure	250 bar G

Diaphragm Compressor

Product Family



- 4 compressor crankcase options with associated heads
- All compressor options are capable of suction pressures from atmospheric to 1,000 barg.
- Greater flow capacity with crank size, rod load, and head diameter

Example: H₂ gas, 30 bar in, 500 bar out

1. PDC-13 – 1000 kg/day

15' L x 8' W (4.5 x 2.4 M)

2. PDC-4(150) - 115 kg/day

6.5' L x 6.5' W (1.9 x 1.9 M)

3. PDC-4(100) – 70 kg/day

6' L x 6' W (1.8 x 1.8 M)

4. PDC-3 - 50 kg/day

3' L x 3' W (1x1M)



BACKGROUND

Founded 1977

2nd generation, family-owned

Local sourcing

MANUFACTURING

90,000 sq. ft., >20 CNC

ISO 9001:2015 certified

SERVICE

Best-in-class global field service

Inventory/quality OEM spare parts available direct from PDC

EXPERIENCE

> 4700 compressors installed

> 500 for H₂ energy

> 50 Hydrogen Refueling Stations

Manufacturing Capabilities



Foundry

Heat Treatment

NABL Accredited Metallurgy & Metrology Lab

Machine Shop

Assembly Shop

Paint Booth

Testing Facility

Fabrication Shop

Packaging Facility

Tool Room

Pattern Shop



>98%
on-time
delivery index



<24 Hrs
MTTR



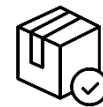
<0.08%
warranty cost



Lowest
cost of
ownership



Foundry Capability
deliver 8 tones
per day



3MW
capacity for building and
testing packages at Saswad



Manufacturing Capabilities

Smart Factory



IIoT Enabled Manufacturing
(OEE > 90% , PPM <500, FTA > 98%)

Adapted to cloud hosting & the **new-age PLM** (Product Life Cycle Management) framework

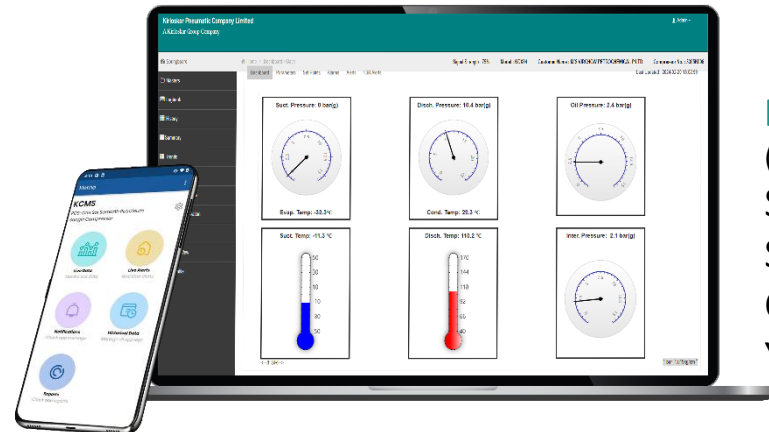
Digitalized Stores for efficient **Inventory Management**

Digitalized Audit Management to improve overall efficiency

Digitalized Activity Tracker and Reports to get real time insights

Automated Testing Beds

Kirloskar CMS
User-Friendly App for Effortless CNG Package Performance Monitoring



KRMS
(Kirloskar Remote Monitoring System)
Seamlessly Monitoring KCX Series Refrigeration Compressor Performance at Your Convenience

Nashik Manufacturing Division

Forging

Forging Weights from
50 kgs to 500 kgs

Inhouse Normalizing
& Annealing Furnace

In-house Machining

Machine & Equipment

Pre-Forging
Counter Blow Hammer
Trimming Press Machine

8k
Tons
Annual
Capacity

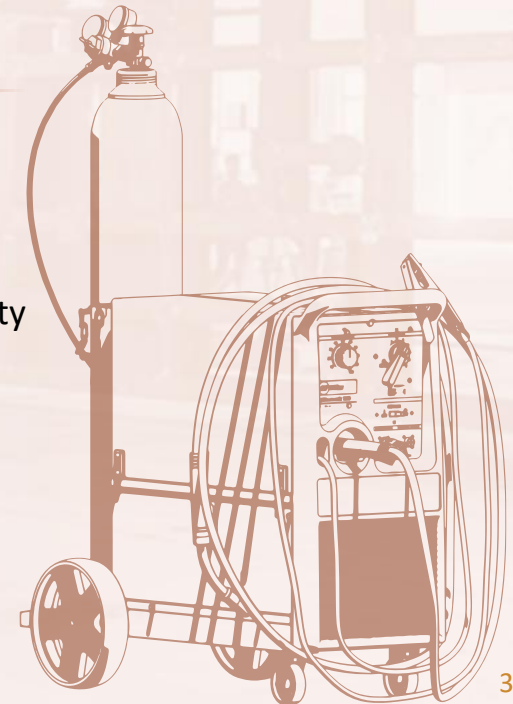
30%
for captive
requirement,
balance for
customers
outside KPCL

Fabrication

9,000 sq.m.

facility with
adequate handling
equipment.

700
MT/ Annum
production capacity



Set up of Foundry - Lost Foam Castings Technology

Capacity: 2400 T Melting per annum.

Cast Iron / Ductile Iron, SG Iron, Steel & SS Casting

Advantages:

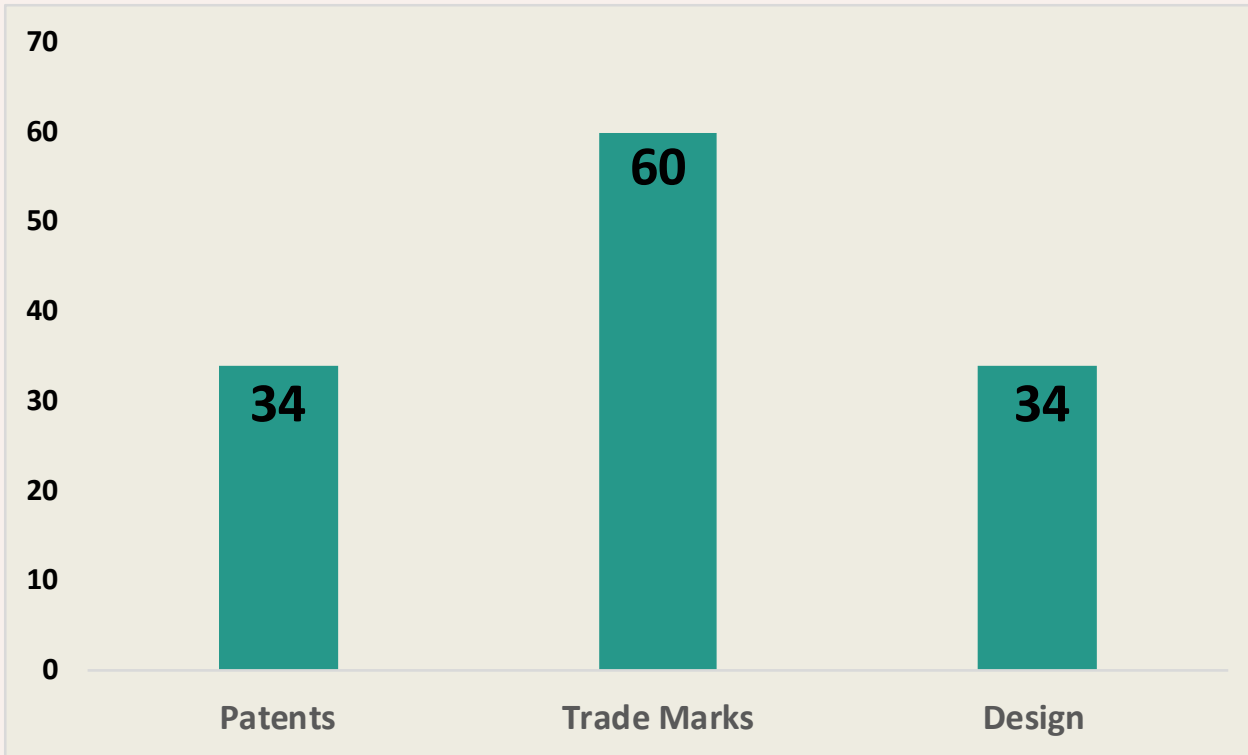
- Fine finish of castings - Surface finish of the foam determines the casting finish.
- No usage of resins - Significant cost reduction.
- Since no resin in sand, sand can be reused perpetually.
- Environmentally friendly.



Intellectual Properties

Total IP filed : 128

57 IP in FY26 (41 IP's in FY25)



Our Partners in Research



IIT Bombay



IISc Bengaluru



VJTI Mumbai

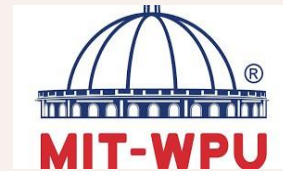


VIT, VU, VIIT Pune



भारी उद्योग मंत्रालय
MINISTRY OF
HEAVY INDUSTRIES

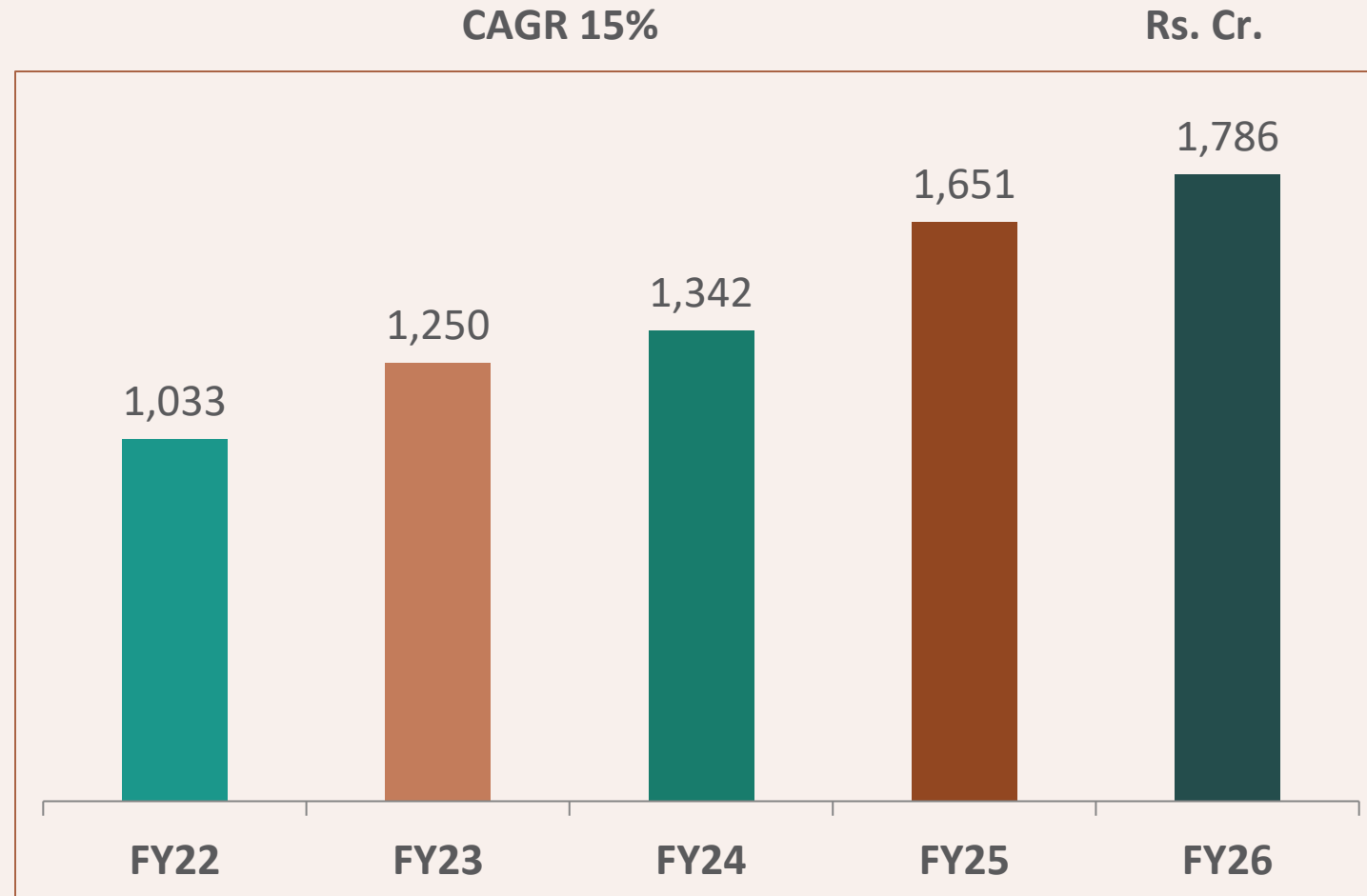
MHI, Govt of India



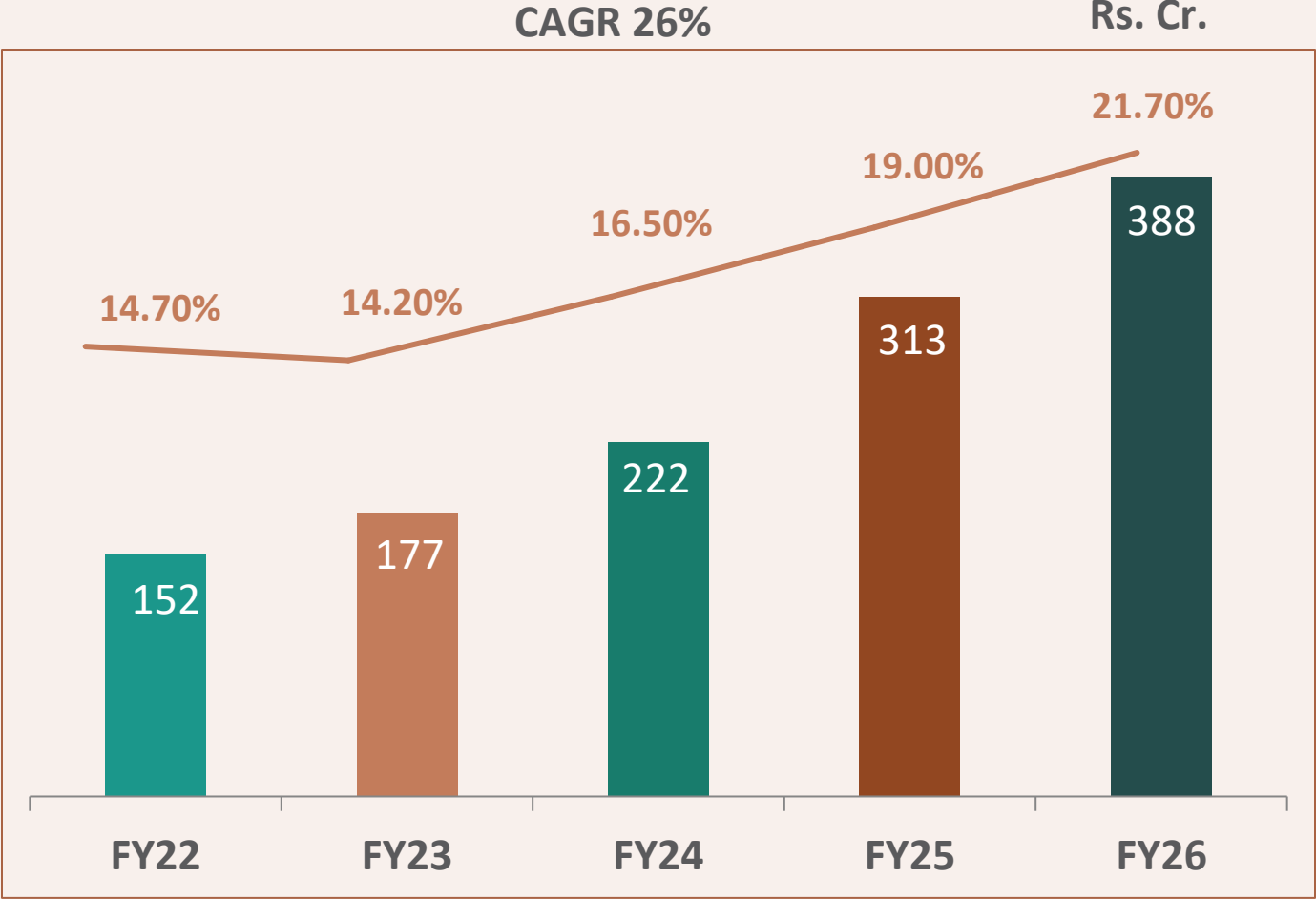
MIT Pune

Financial Highlights





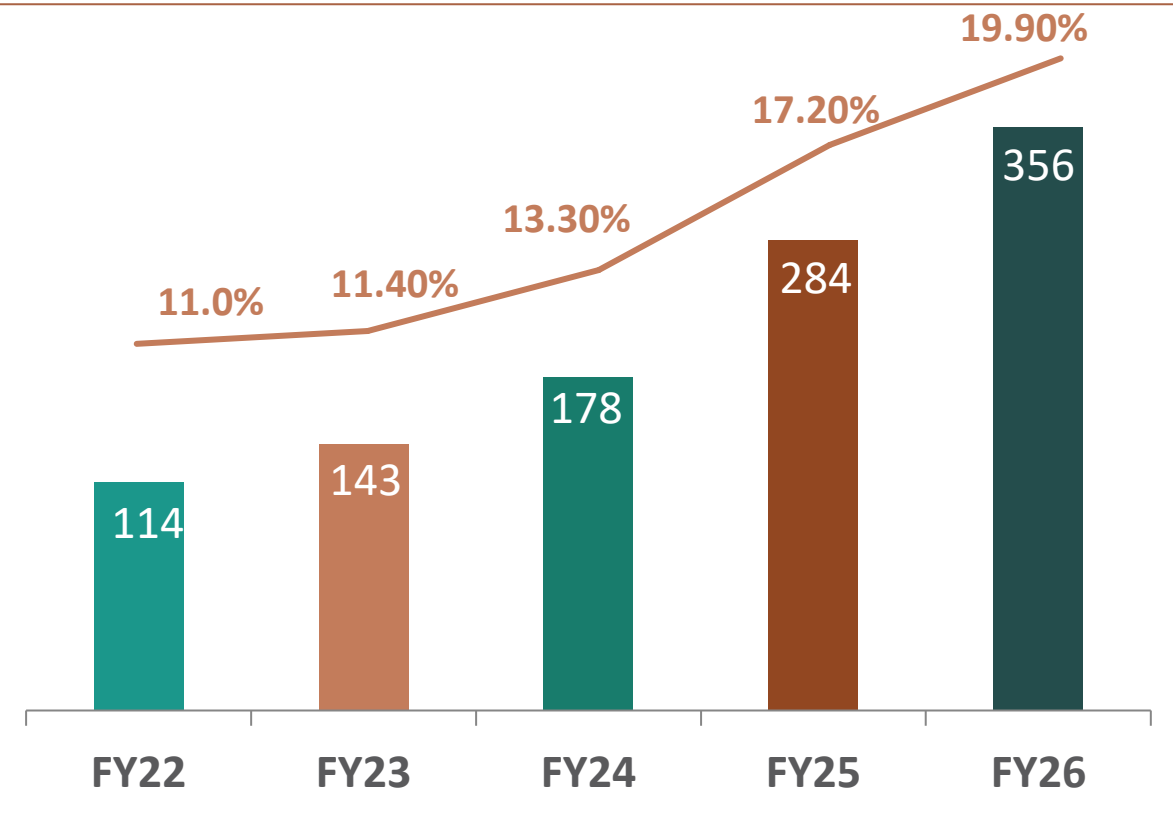
EBITDA & EBITDA %



PBT & PAT

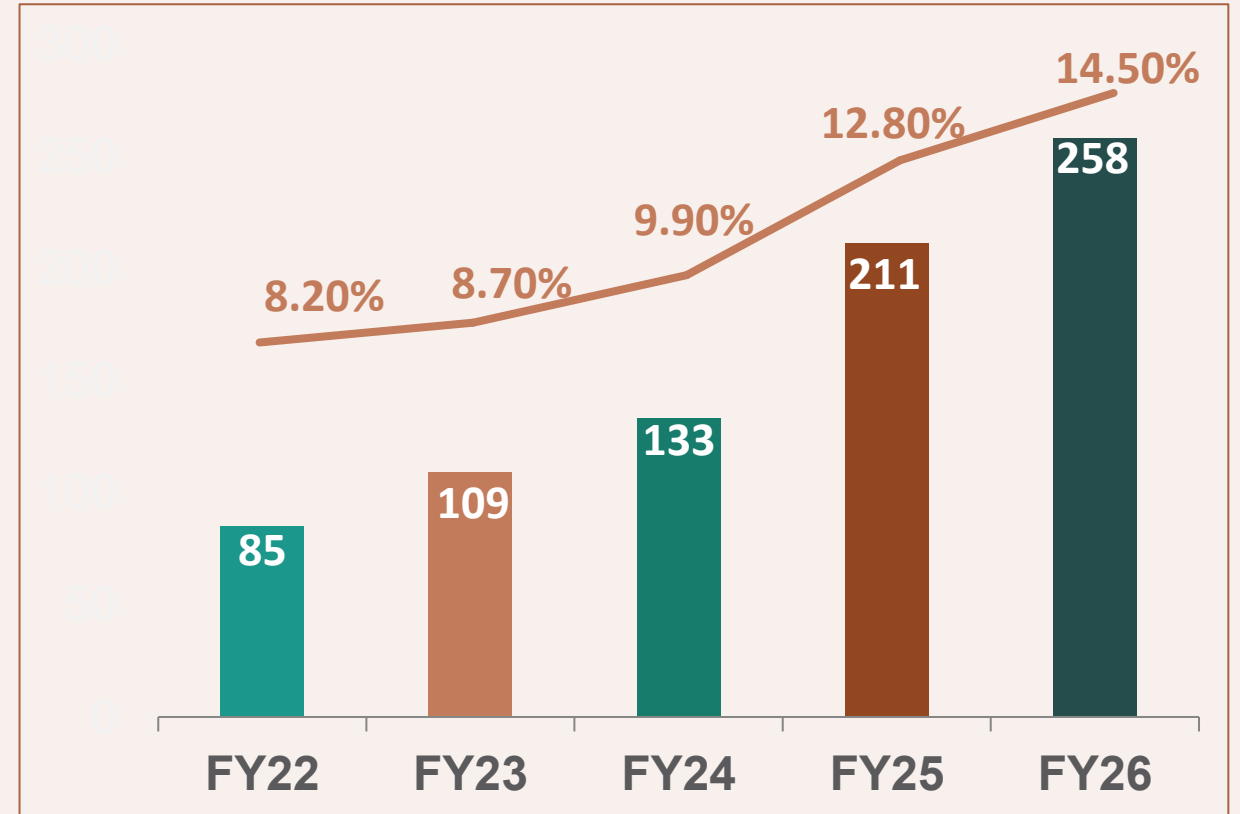
CAGR 33%

Rs. Cr.



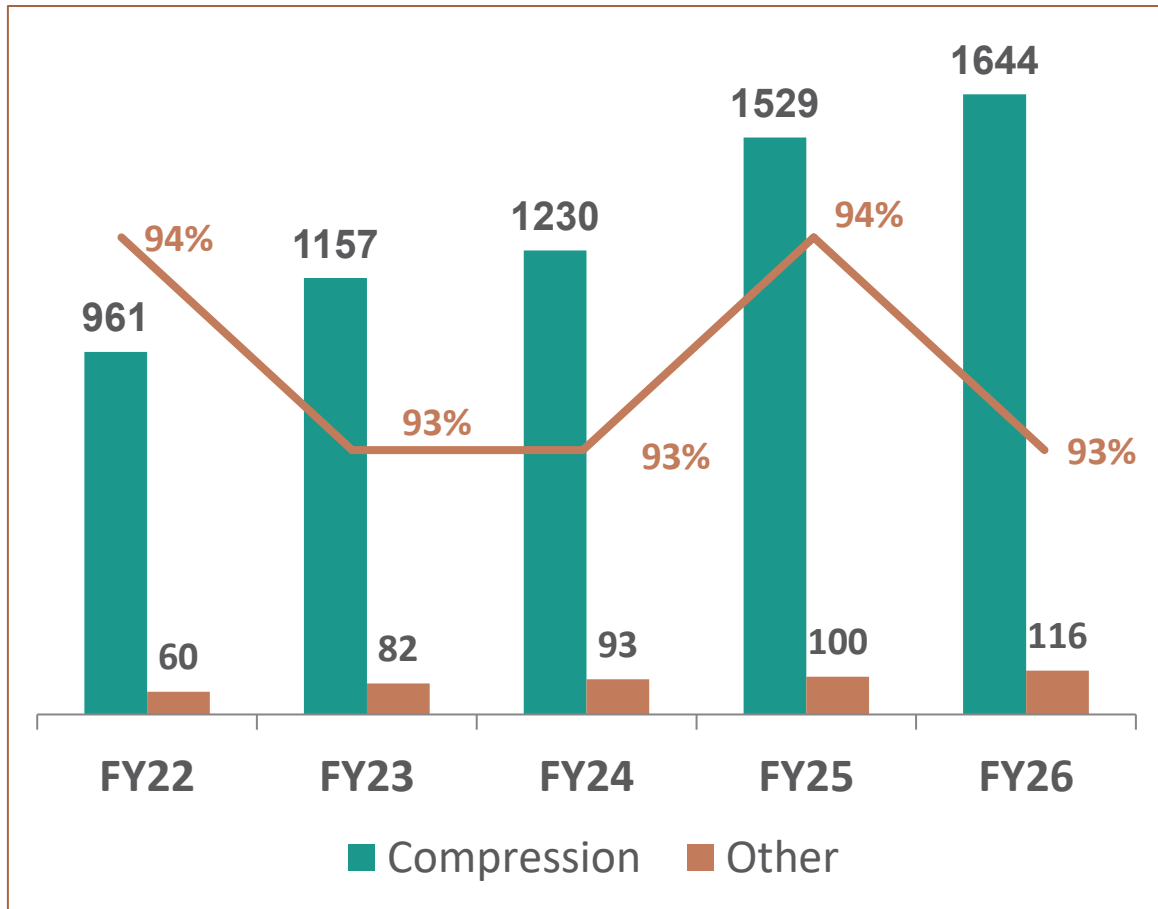
CAGR 32%

Rs. Cr.

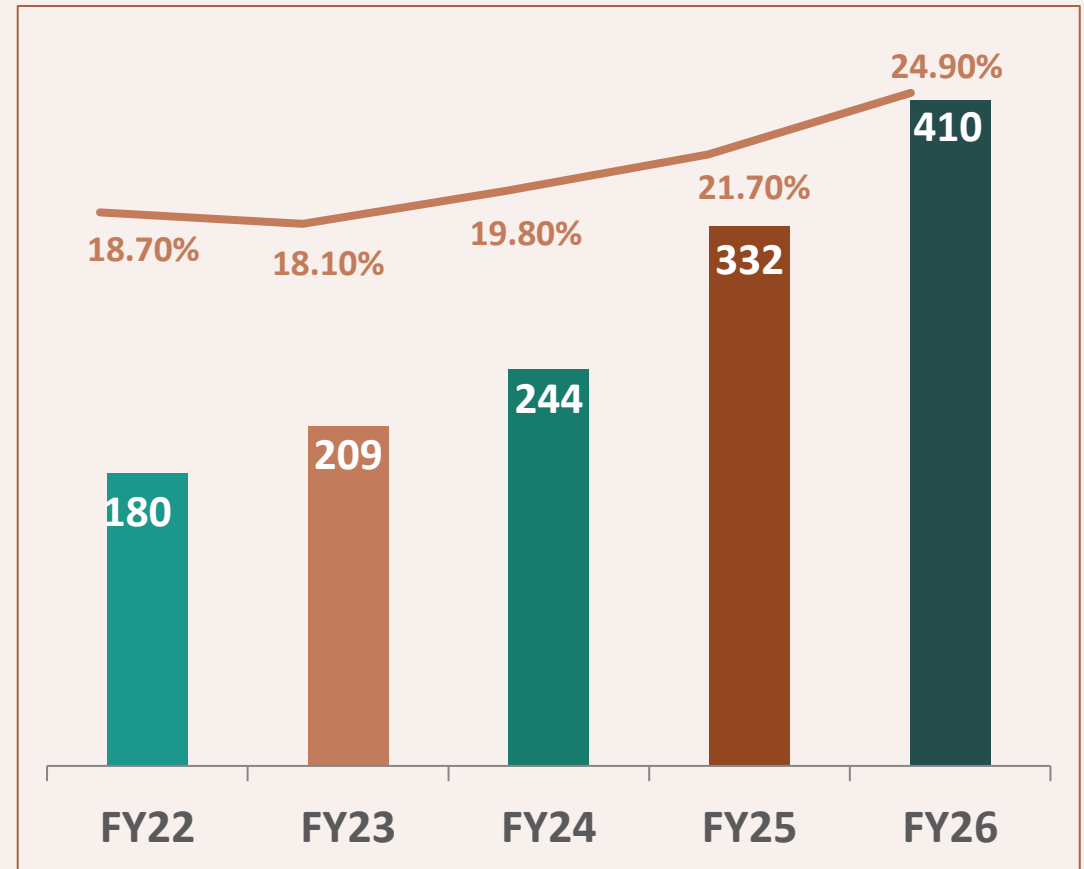


Segment Results

SALES Rs. Cr.

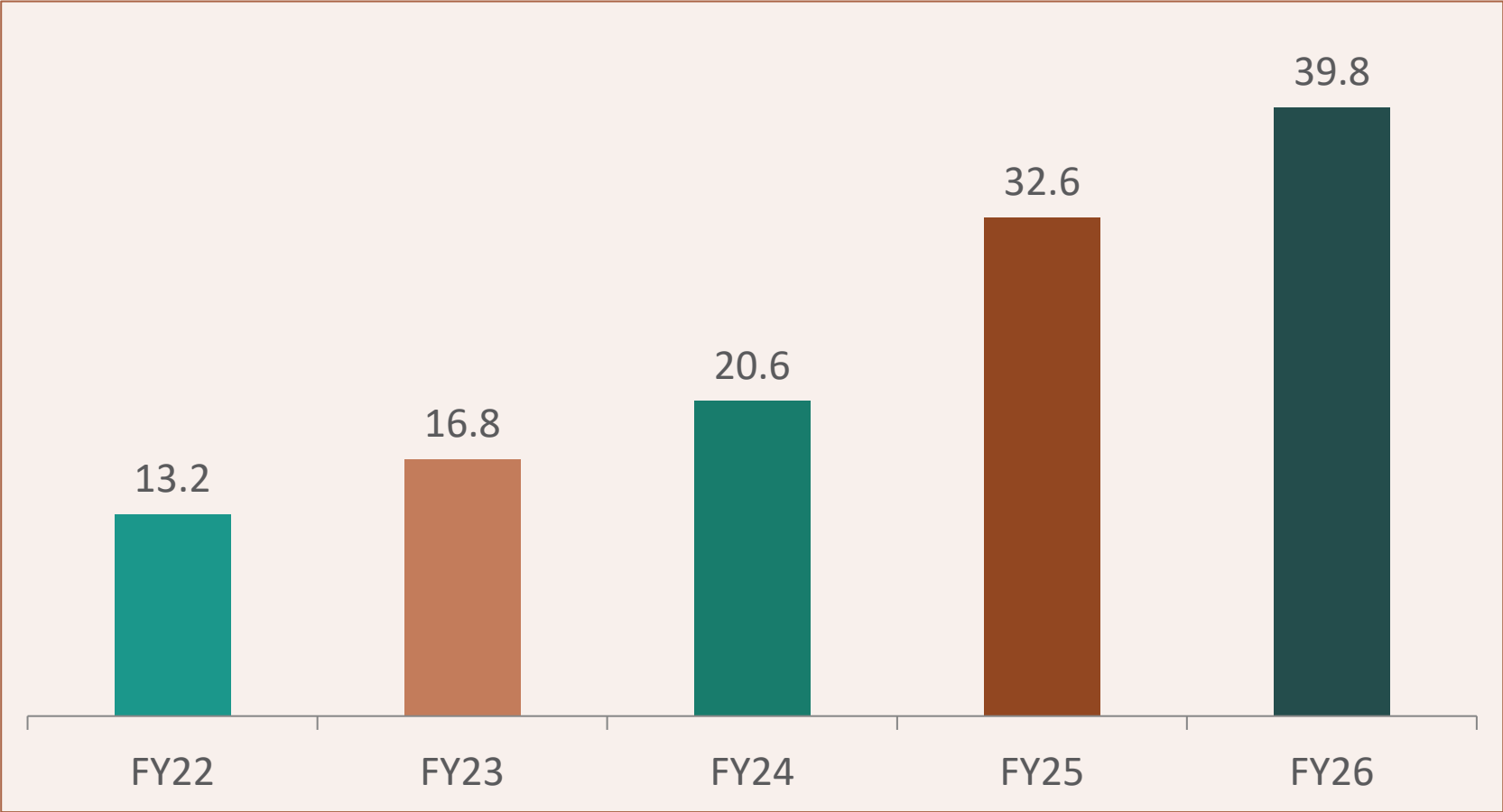


EBITDA & EBITDA % Rs. Cr.

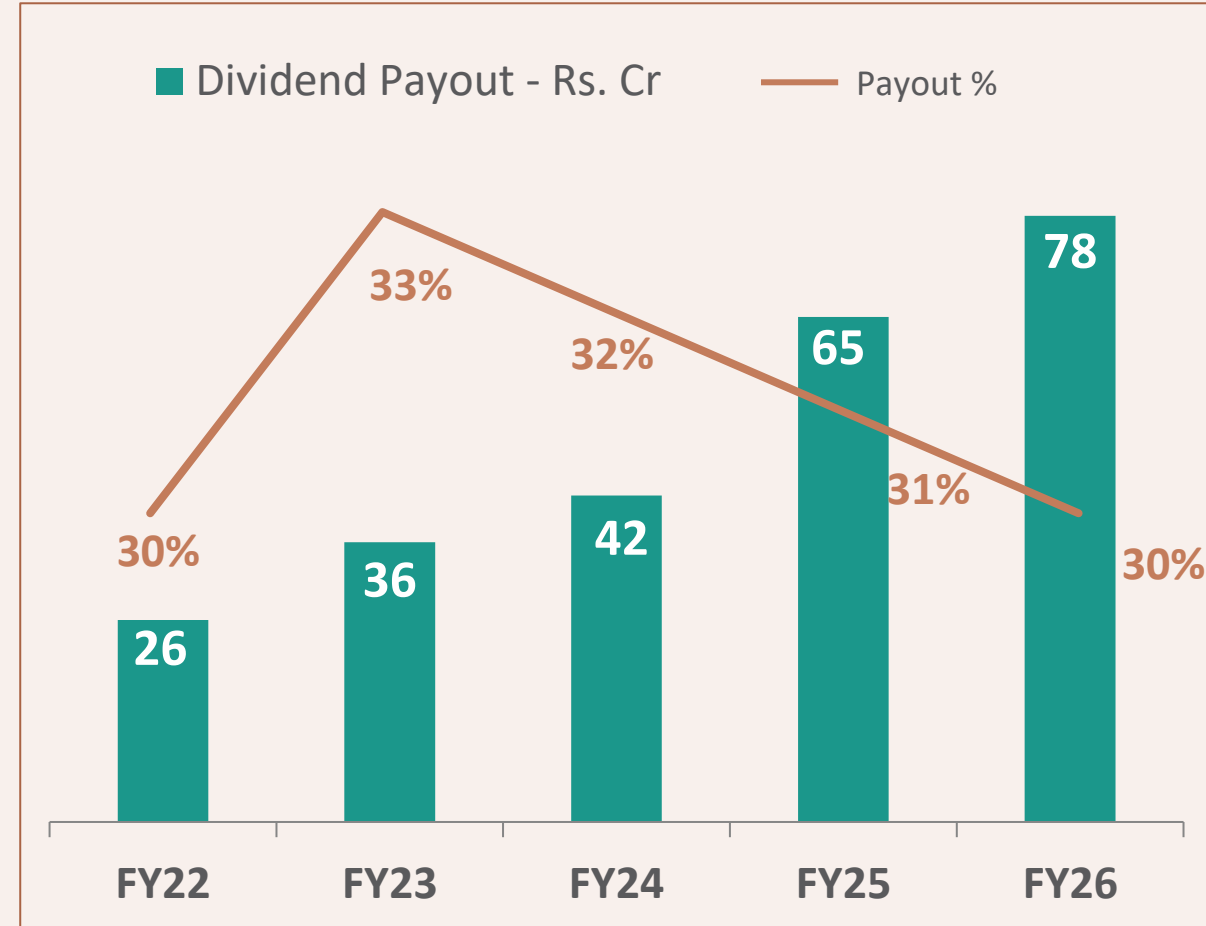
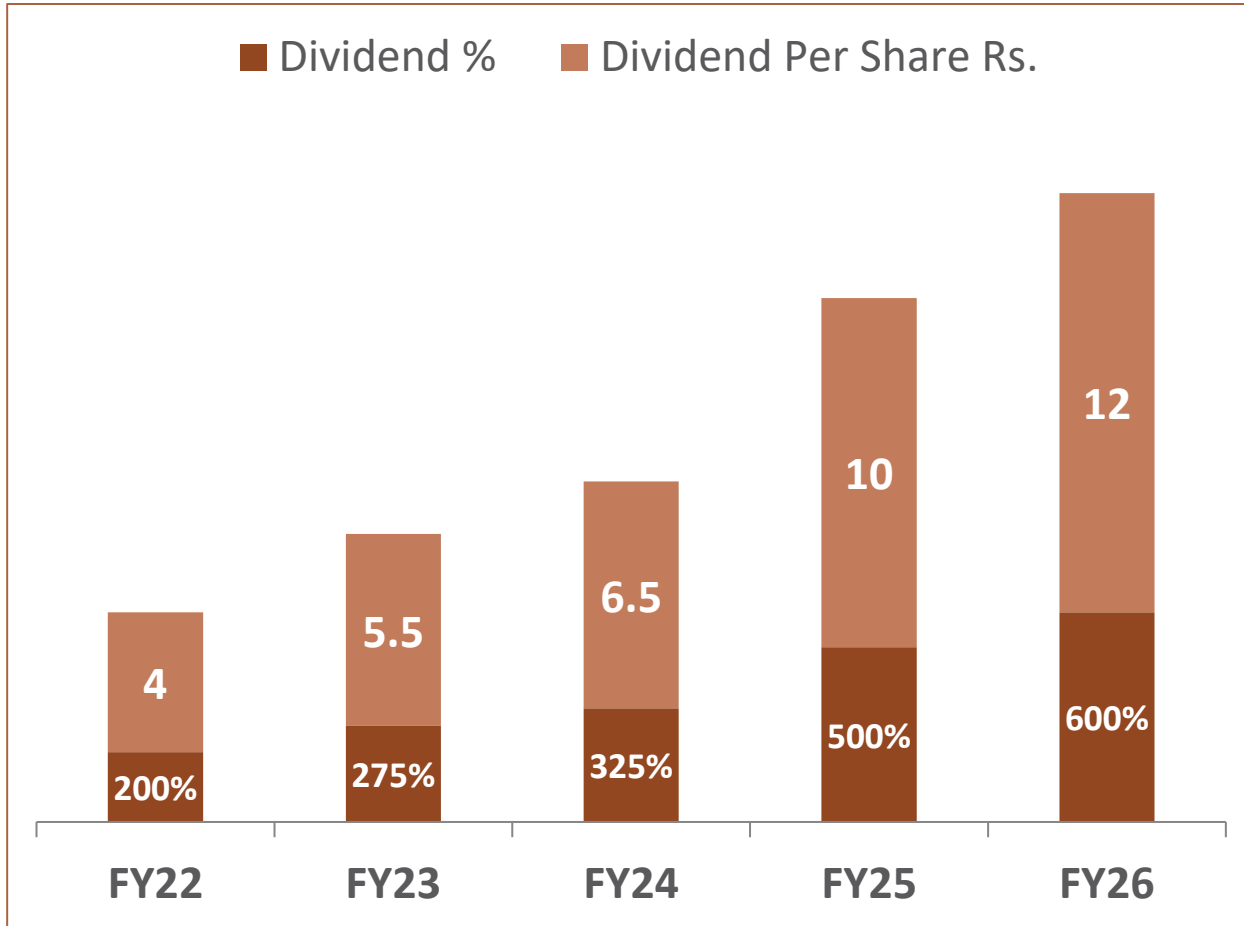


Earning Per Share

Rs. / Per share



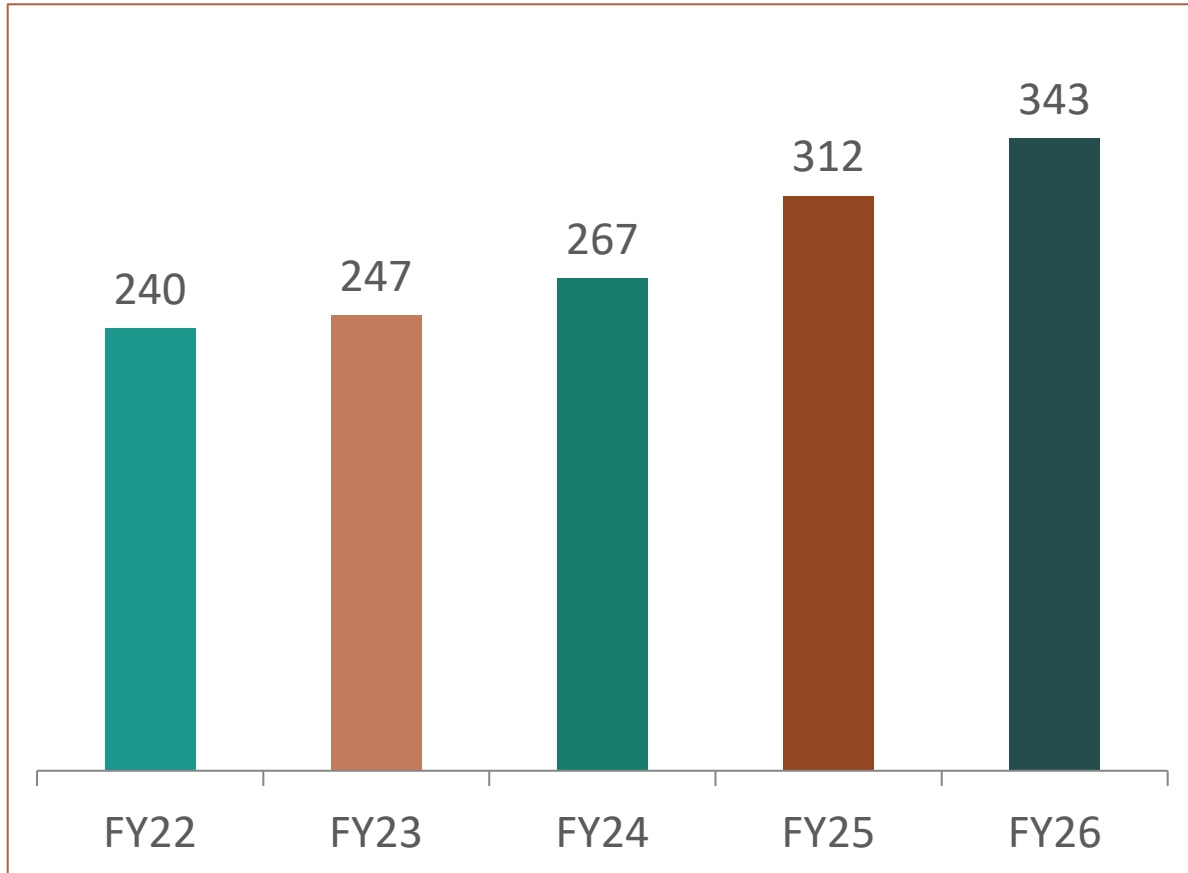
Dividend



FY26 – Final dividend@ 425 i.e. Rs. 8.50 per share is subject to approval by shareholders.

Net Fixed Assets

Rs. Cr.

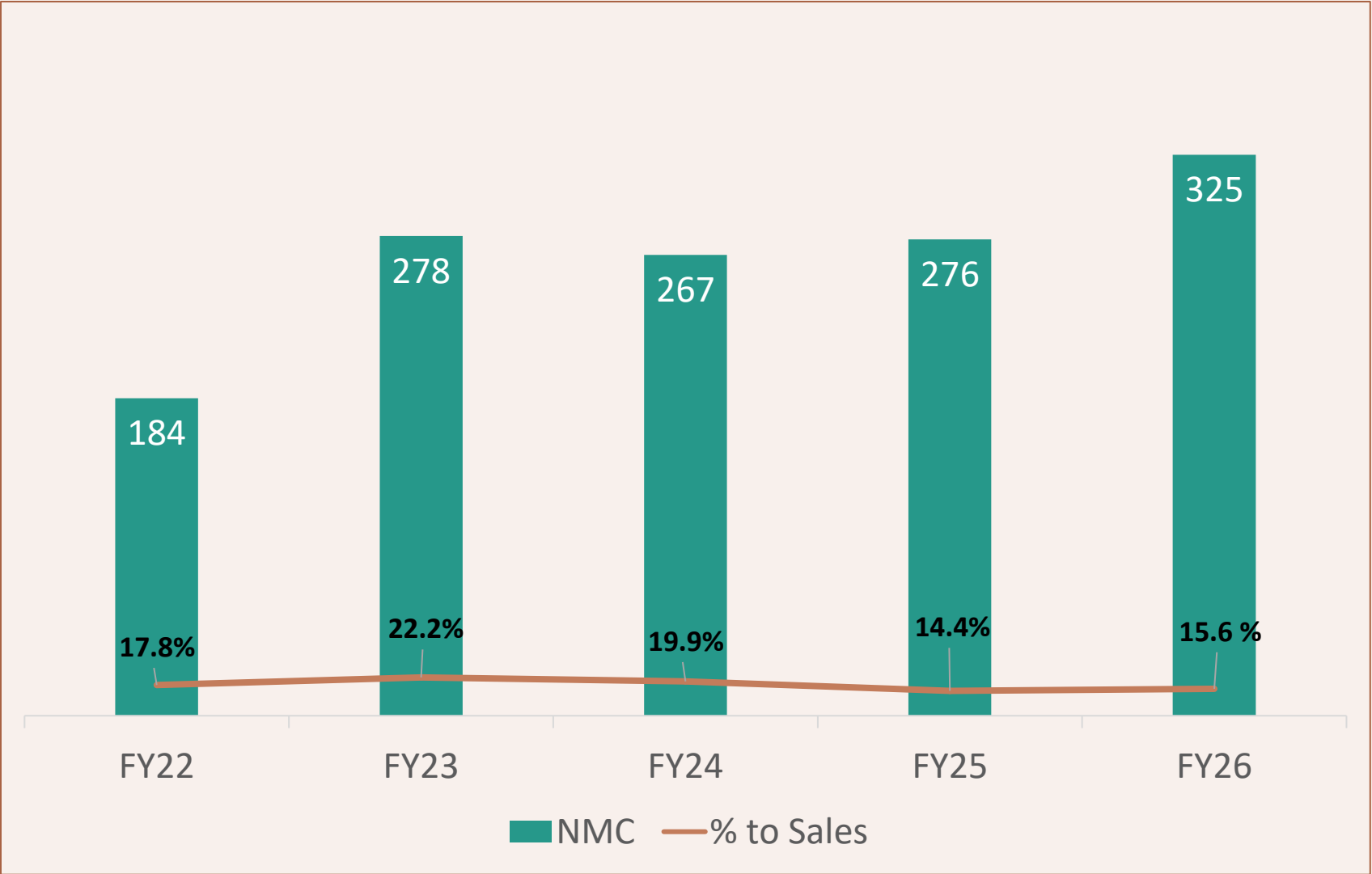


Capex Additions

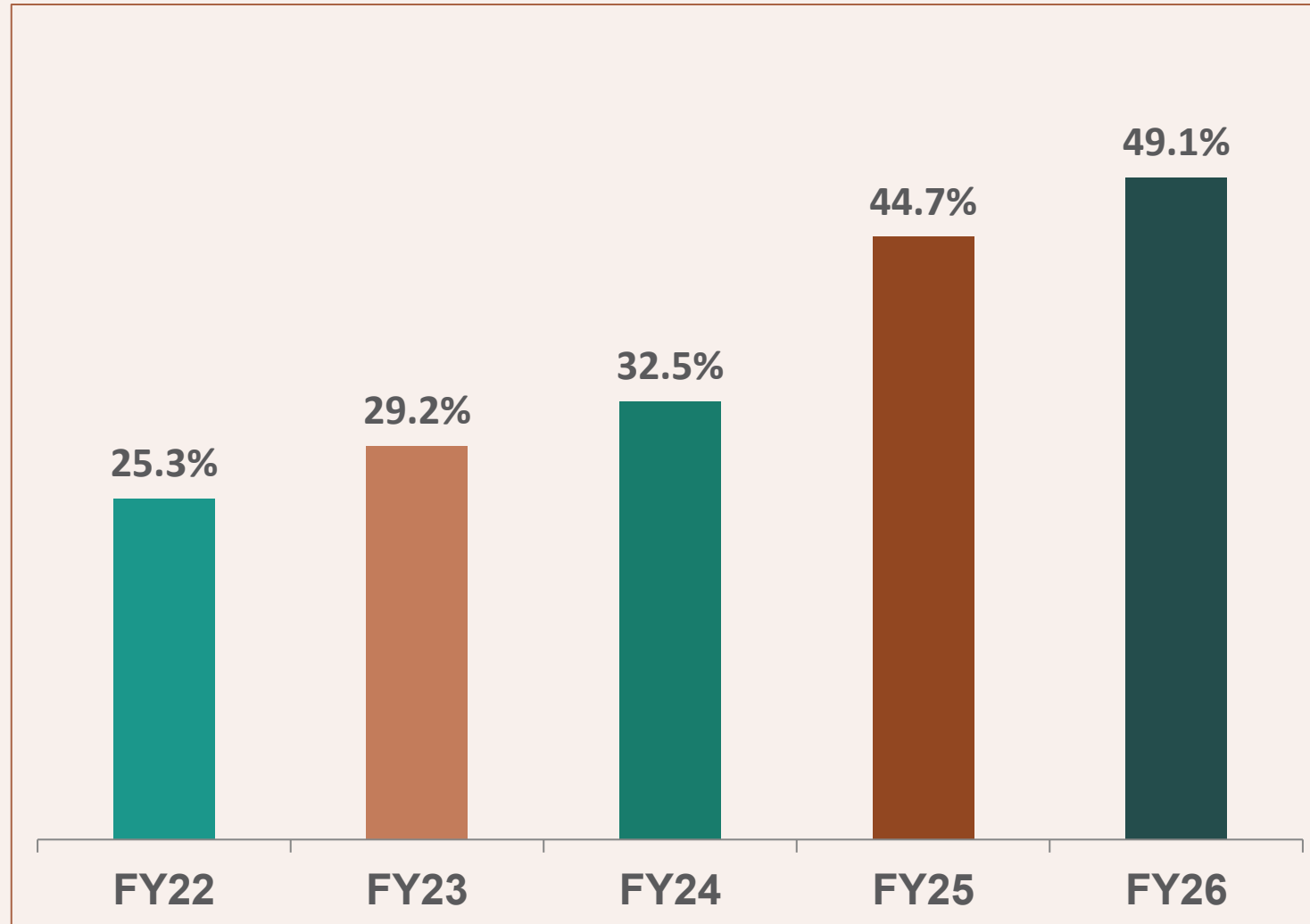
Year	Rs. Cr
FY22	93
FY23	40
FY24	55
FY25	78
FY26	66
Total	332

Net working capital

Rs. Cr.



Return on capital employed (ROCE)



Cash and Cash equivalent

Rs.Cr					
	FY22	FY23	FY24	FY25	FY26
Current Investments	127	104	186	269	343
Cash & Bank Balance	36	90	53	67	117
Total	162	194	239	336	460
Less: Borrowings	-	-	-	-	-
Net Cash & Cash Equivalent	162	194	239	336	460

There are no loans, neither term loans nor short term borrowings
It is a debt free company

Acquiring A Majority Stake In

SYSTEMS & COMPONENTS (INDIA) PVT LTD

A reputed player in the Refrigeration space for over 30 years.

- Over 700 installations in Pharma, Chemical and Food industry across India.
- Manufacturing facility at Murbad, Maharashtra.



Awards, Recognitions & Certifications

IMS Certification

IMS : Integration of ISO 9001:2015, ISO 14001:2015 & ISO 45001:2018



ISO 9001:2015



ISO 14001:2015



ISO 45001:2018



IMS

Accreditation of Metallurgy Laboratory in accordance with the standard
"ISO / IEC 17025:2017 - General requirements for the Competence of testing & calibration Laboratories" in the field of "Calibration" for our Calibration facilities at Hadapsar Plant from National Accreditation Board for Testing & Calibration Laboratories.



  National Accreditation Board for Testing and Calibration Laboratories
NABL

CERTIFICATE OF ACCREDITATION

KIRLOSKAR PNEUMATIC CO. LTD. - METROLOGY LABORATORY

has been assessed and accredited in accordance with the standard
ISO/IEC 17025:2017
"General Requirements for the Competence of Testing & Calibration Laboratories"
for its facilities at
HADAPSAR INDUSTRIAL ESTATE, SOLAPUR ROAD, PUNE, MAHARASHTRA, INDIA
in the field of
CALIBRATION

Certificate Number: CC-3503
Issue Date: 03/12/2022 Valid Until: 02/12/2024

This certificate remains valid for the Scope of Accreditation as specified in the annexure subject to continued satisfactory compliance to the above standard & the relevant requirements of NABL.
(To see the scope of accreditation of this laboratory, you may also visit NABL website www.nabl-india.org)

Name of Legal Identity : KIRLOSKAR PNEUMATIC COMPANY LIMITED
Signed for and on behalf of NABL




N. Venkateswaran
Chief Executive Officer

Prize for Distinction in HR Excellence



2019



2020



2021



2022



2024

At the 15th CII National HR Excellence Award 2025

for Scoring 600+ Points consecutively 5 times in a row





Kirloskar Pneumatic Company Limited is honored to receive the Golden Peacock HR Excellence Award 2025 (Engineering Sector) - one of India's most prestigious recognitions in the field of Human Resource Management.

Our company was selected from 447 organisations across India through a rigorous three-tier evaluation process and is proud to be among the Top 14 organisations in the country, achieving this distinction in its very first participation.

The award was presented on 19th & 20th February 2026 at the 20th International Conference on Corporate Social Responsibility & Golden Peacock Awards Ceremony organised by **the Institute of Directors, India.**

Environmentally Conscientious: ESG Approach

Solar (Renewable) Energy Focus

Solar electricity generation plant capacity

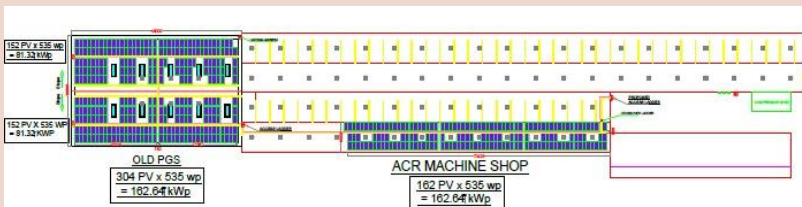
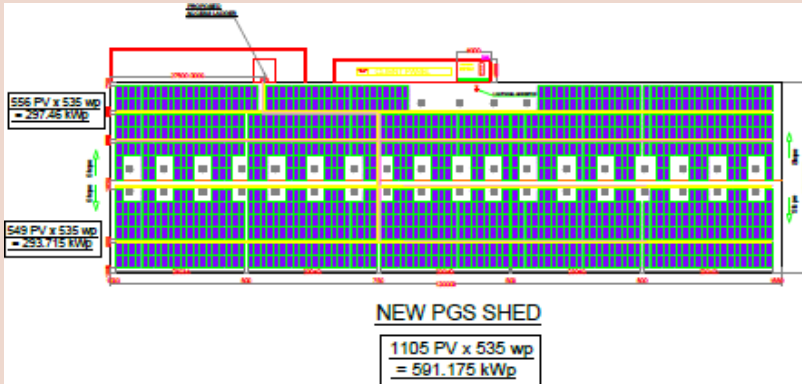
- 840 kWp
- Commissioning in April 2023

% Electricity generation of total electricity consumption

- 60%

Commercials

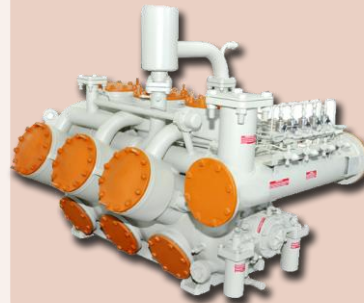
- Investment - 4Cr
- Payback - 4 Years



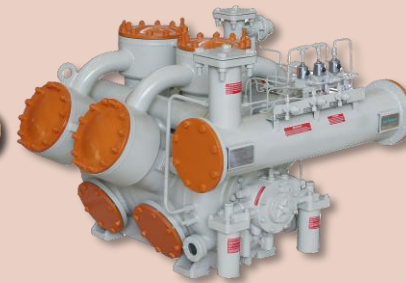
Responsible Products Natural Resource Conservation (R & D Focus)

Type	FY' 16	FY' 17	FY' 18	FY' 19	FY' 20	FY' 21	FY' 22	FY' 23
KC(Water Cooled)	54 %	25 %	13 %	10 %	9 %	3 %	7 %	10%
KCX(Air Cooled)	46 %	75 %	87 %	90 %	91 %	97 %	93 %	90%
Total Number of Compressors	1655	2022	2037	1610	1563	1331	1535	1615

Water Cooled Compressor



Air Cooled Compressor



Green & Clean Company Plantation, Biodiversity Focus



Installed and commissioned solar power systems at our Saswad Unit-2, Hadapsar and Nashik facilities. With these installations, all of our factories are now powered by renewable energy to the extent of 30% power consumption in total, enhancing our commitment to ESG (Environment, Social and Governance) principles.



Hadapsar plant



Saswad plant – Unit 2



Nashik plant



Pond Capacity - 6 Million Litres



UG open Tank Capacity - 1 Million Litres

Key Features :

- Self sufficient in water resources
- Rainwater collection & storage
- Connected to entire Nashik factory

CII National Award for Energy Efficient Unit

This recognition highlights our sustained efforts in:

- Implementing energy conservation initiatives across operations.
- Enhancing operational efficiency through innovative solutions.
- Reducing Specific Energy Consumption (SEC) and optimizing resource utilization.
- Supporting the organization's long-term Net Zero and ESG commitments.



Socially Engaged: Focus Areas

1 Education

Youth Skilling, Bharari and KaShi

Initiatives focusing on skill building for the youth of the socio-economically challenged class.



Collaboration with NTTF for Skilling Youth for Employability



The Bharari Initiative supported 944 students across 6 schools in Saswad and Hadapsar through life skills training, counselling, psychological support, academic development programs



KaShi (Kanya Shiksha)- Education Supports

2 Health

Healthcare programmes built keeping invisible challenges and fundamental needs at the core.



Free medical health check-up camps with doctor consultations were conducted in 17 schools and 2 colleges across Pune, Saswad, and Nashik, benefiting over 1,000 teaching and non-teaching staff.



The Releshani Adolescent Health Program reached 2,870 students across 15 institutions through workshops on mental health, well-being, and healthy relationships for students from 8th to 11th standard.

3 Environment

Environmental School & College Initiatives

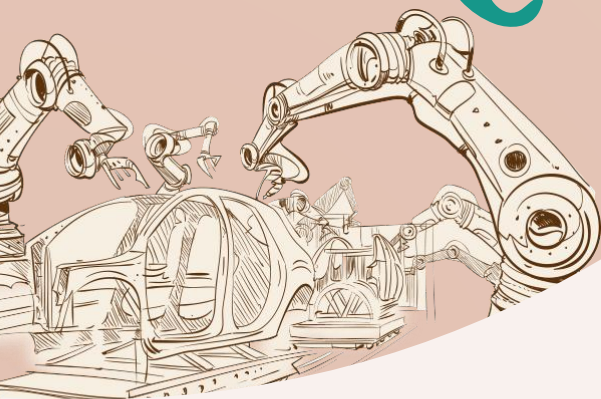
Initiatives focusing on preserving the world around us.



The Green Vasundhara Initiative promoted environmental awareness across 15 schools and 10 colleges through workshops, competitions, Eco Ranger Clubs, and green projects, reaching over 50,000+ students, teachers, and parents.

Together, We are

limitless



Innovative

**One Stop
Solution Provider**

Reliable

